

Upholstery Collections

PEDRALI®

Material for upholstery and cushions

Rivestimenti per imbottiture e cuscini

Legend

Legenda

| category | card | FABRIC | FIRE RETARDANT FABRIC | OUTDOOR FABRIC | GENUINE HARD LEATHER | REGENERATED HARD LEATHER | LEATHER | SIMIL LEATHER | FIRE RETARDANT SIMIL LEATHER | VELVET | FIRE RETARDANT VELVET |
|-----------|----------------------------|--------|-----------------------|----------------|----------------------|--------------------------|---------|---------------|------------------------------|--------|-----------------------|
| A | 11 | ● | ● | ● | ● | ● | ● | ● | ● | ● | ● |
| C | 04, 05, 06, 07, 10 | ● | ● | ● | ● | ● | ● | ● | ● | ● | ● |
| D | 05, 07 | ● | ● | ● | ● | ● | ● | ● | ● | ● | ● |
| D outdoor | 08, 09 | ● | ● | ● | ● | ● | ● | ● | ● | ● | ● |
| E | 14 | ● | ● | ● | ● | ● | ● | ● | ● | ● | ● |
| F | 13 | ● | ● | ● | ● | ● | ● | ● | ● | ● | ● |
| G | 01, 02, 03, 04, 05, 06, 14 | ● | ● | ● | ● | ● | ● | ● | ● | ● | ● |
| H | 06, 07, 11, 14 | ● | ● | ● | ● | ● | ● | ● | ● | ● | ● |
| N | 03, 07, 14 | ● | ● | ● | ● | ● | ● | ● | ● | ● | ● |
| N outdoor | 08 | ● | ● | ● | ● | ● | ● | ● | ● | ● | ● |
| P | 12 | ● | ● | ● | ● | ● | ● | ● | ● | ● | ● |



Fire-retardant
Ignifugo



Outdoor use
Adatto per uso esterno

washing / lavaggio

drying / asciugatura



Do not wash
Lavaggio a secco



Tumble dry at low temperature
Asciugatrice a bassa temperatura



Hand wash
Lavaggio a mano



Do not tumble dry
Non asciugare in asciugatrice



Wash at max 30°C normal
Lavaggio normale, max 30°C



Dry flat
Asciugare disteso



Wash at max 30°C mild
Lavaggio delicato, max 30°C



Do not wring
Non strizzare



Wash at max 40°C normal
Lavaggio normale, max 40°C



ironing / stiratura



Wash at max 60°C mild
Lavaggio delicato, max 60°C



Do not iron
Non stirare

dry cleaning / lavaggio a secco



Iron at low temperature
Stirare a bassa temperatura



Do not dry clean
Lavaggio a secco non consentito



Iron at medium temperature
Stirare a media temperatura



Dry clean, perchlorethylene (PCE)
Lavaggio a secco con percloroetilene (PCE)



bleaching / candeggio



Gentle dry cleaning with PCE
Lavaggio a secco delicato con PCE



Do not bleach
Non candeggiare



Any bleaching agent allowed
Candeggio consentito



Compliant to Ecolabel UE
environmental
requirements
Conforme ai requisiti
ambientali Ecolabel UE



Product certified for low
chemical emissions:
Prodotto certificato per basse
emissioni di sostanze chimiche:
UL.COM/GG
UL 2818



96/98/CE – 2010/68/UE
EU marine equipment rules
compliant
Conforme ai requisiti europei
per equipaggiamenti marittimi

Colours of samples are approximate. Pedrali S.p.A. reserves the right to modify or upgrade the products without prior notice.
I colori dei campioni sono indicativi. Pedrali S.p.A. si riserva la facoltà di apportare modifiche o migliorie senza alcun preavviso.

Fabrics

Tessuti

category G

PEDRALI®

G 

G59÷G69 | G190÷G197

G70÷G78

COMPOSITION
COMPOSIZIONE90% New wool
10% Nylon90% New wool
10% NylonWEIGHT
GRAMMATURA550 g/m²
(16.22 oz/yd²)590 g/m²
(17.37 oz/yd²)ABRASION
ABRASIONE100.000 cycles
Martindale (EN ISO 12947)100.000 cycles
Martindale (EN ISO 12947)RUBBING FASTNESS
SOLIDITÀ ALLO SFREGAMENTODry and Wet 4-5, scale 1-5
(ISO 105-X12)Dry 4 and Wet 3-4, scale 1-5
(ISO 105-X12)

PILLING

4, scale 1-5
(EN ISO 12945)3-4, scale 1-5
(EN ISO 12945)LIGHT FASTNESS
SOLIDITÀ ALLA LUCE6-7, scale 1-8
(ISO 105-B02)6, scale 1-8
(ISO 105-B02)SOUND ABSORPTION
ASSORBIMENTO ACUSTICOfolded: $\alpha_w = 0.95$ Class A
(EN ISO 354)folded: $\alpha_w = 0.80$ Class B
(EN ISO 354)FLAME RESISTANCE
RESISTENZA AL FUOCO

AS/NZS 1530.3
AS/NZS 3837 Class 2
ASTM E84 Class B Adhered
ASTM E84 Class B Unadhered
BS 5852 Part 1
BS 5852 Crib 5 with treatment
EN 1021 – 1/2
IMO FTP Code 2010: Part 8
NF D60-013
NFPA 260
ÖNORM B1/Q1
SN 198 898 5.3 with treatment
UNI 9175 Classe 1 IM
US CA TB 117-2013 - Compliant to
the criteria certifying the absence of
flame retardant chemicals (AB 2998)

AS/NZS 1530.3
AS/NZS 3837 Class 2
ASTM E84 Class B Adhered
ASTM E84 Class A Unadhered
BS 5852 Part 1
BS 5852 Crib 5 with treatment
EN 1021 – 1/2
EN 13501, B-s2, d1, with treatment
IMO FTP Code 2010: Part 8
NF D60-013
NFPA 260
ÖNORM B1/Q1
SN 198 898 5.3 with treatment
UNI 9175 Classe 1 IM
US CA TB 117-2013 - Compliant to
the criteria certifying the absence of
flame retardant chemicals (AB 2998)

APPROVED
OMOLOGATO

PRODUCT CERTIFIED
FOR LOW CHEMICAL
EMISSIONS:
UL COMIGG
UL 2818
170166-420

CLEANING
LAVAGGIO



G

Collection / Collezione

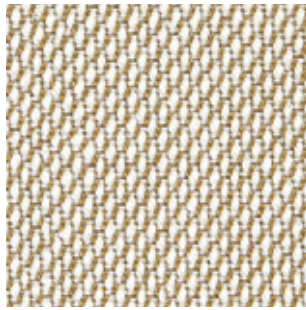
• kvadrat

STEELCUT TRIO

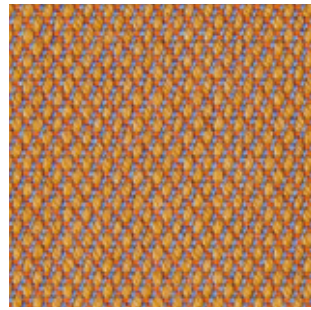
from G59 to G69
from G190 to G197

DESIGNERS Dijkmeijer & Ridolfo

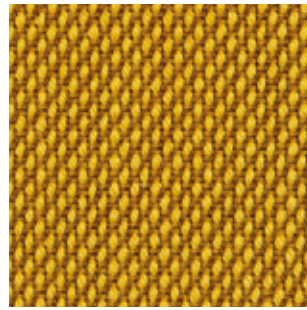
G 66



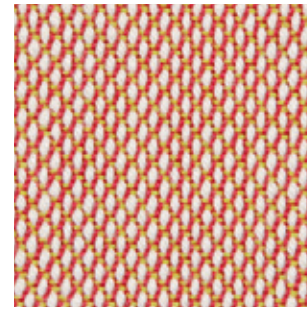
G 190



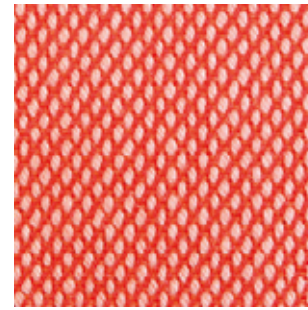
G 67



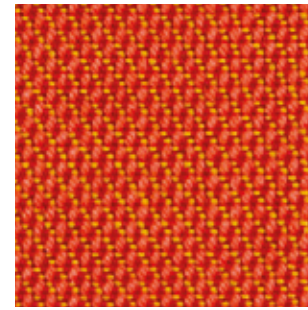
G 59



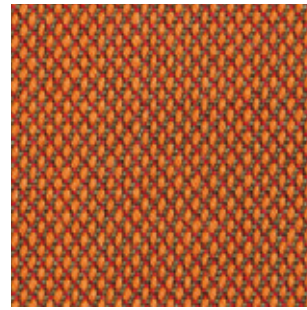
G192



G 69



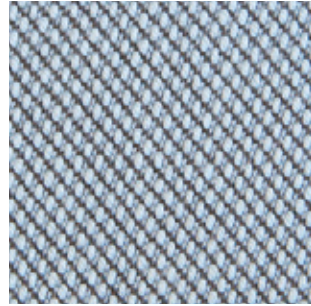
G 191



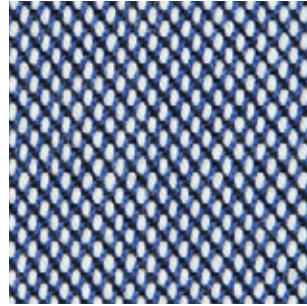
G 193



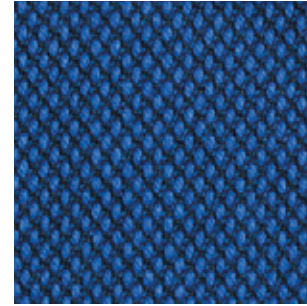
G 195



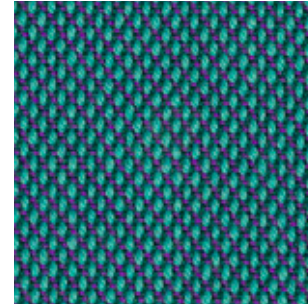
G 196



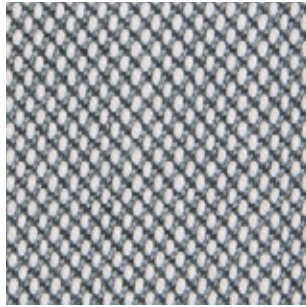
G 197



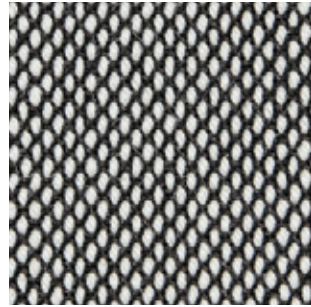
G 68



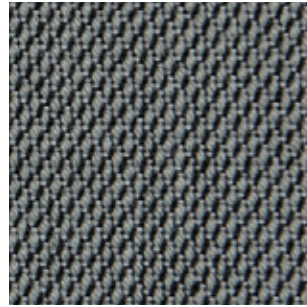
G 194



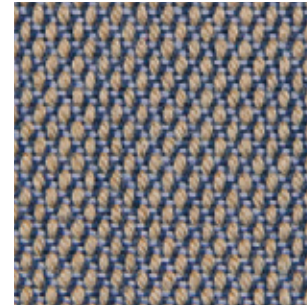
G 63



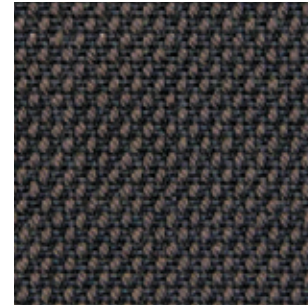
G 62



G 64



G 65



Collection / Collezione

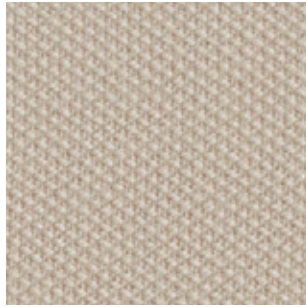
• kvadrat

STEELCUT

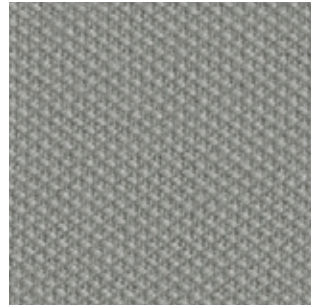
from G70 to G78

DESIGNERS Dijkmeijer & Ridolfo

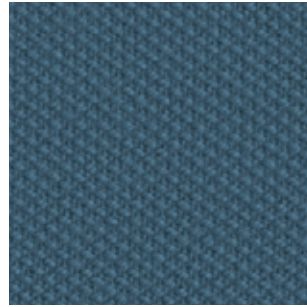
G 71



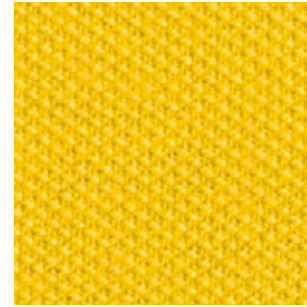
G 73



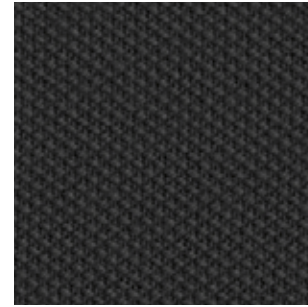
G 75



G 78



G 70







Fabrics

Tessuti

category G

PEDRALI®

G 

| | G159÷G169 | G250÷G258 | G21÷G24 G111÷G116 |
|--|--|---|--|
| COMPOSITION COMPOSIZIONE | 97% New wool 3% Recycled nylon | 97% New wool 3% Recycled nylon | 100% New wool |
| WEIGHT GRAMMATURA | 415 g/m ² (12.21 oz/yd ²) | 400 g/m ² (11.80 oz/yd ²) | 560 g/m ² (16.52 oz/yd ²) |
| ABRASION ABRASIONE | 45.000 cycles Martindale (EN ISO 12947) | 45.000 cycles Martindale (EN ISO 12947) | 45.000 cycles Martindale (EN ISO 12947) |
| RUBBING FASTNESS SOLIDITÀ ALLO SFREGAMENTO | Dry and Wet 4-5, scale 1-5 (ISO 105-X12) | Dry and Wet 4-5, scale 1-5 (ISO 105-X12) | G21÷G24: Dry 5 and Wet 3-4 G111÷G116: Dry and Wet 4-5 scale 1-5 (ISO 105-X12) |
| PILLING | 3-4, scale 1-5 (EN ISO 12945) | 3-4, scale 1-5 (EN ISO 12945) | 3, scale 1-5 (EN ISO 12945) |
| LIGHT FASTNESS SOLIDITÀ ALLA LUCE | 6, scale 1-8 (ISO 105-B02) | 6, scale 1-8 (ISO 105-B02) | G21÷G24: 6-7 — G111÷G116: 5-6 scale 1-8 (ISO 105-B02) |
| SOUND ABSORPTION ASSORBIMENTO ACUSTICO | folded: $\alpha_w = 0.80$ Class B (EN ISO 354) | folded: $\alpha_w = 0.80$ Class B (EN ISO 354) | folded: $\alpha_w = 0.70$ Class C (EN ISO 354) |
| FLAME RESISTANCE RESISTENZA AL FUOCO | AS/NZS 3837 Class 2 ASTM E84 Class A Adhered ASTM E84 Class A Unadhered BS 5852 Part 1 BS 5852 Crib 5 with treatment EN 1021 – 1/2 EN 13773 Class 1 with treatment IMO FTP Code 2010: Part 8 NF D60-013 NFPA 701 with treatment SN 198 898 5.3 with treatment UNI 9175 Classe 1 IM US CA TB 117-2013 - Compliant to the criteria certifying the absence of flame retardant chemicals (AB 2998) | AS/NZS 3837 Class 1 ASTM E84 Class A Adhered ASTM E84 Class A Unadhered BS 5852 Part 1 BS 5852 Crib 5 with treatment EN 1021 – 1/2 EN 13773 Class 1 with treatment IMO FTP Code 2010: Part 8 NF D60-013 NFPA 701 with treatment ÖNORM B1/Q1 SN 198 898 5.3 with treatment UNI 9175 Classe 1 IM US CA TB 117-2013 - Compliant to the criteria certifying the absence of flame retardant chemicals (AB 2998) | AS/NZS 1530.3 ASTM E84 Class A Adhered ASTM E84 Class A Unadhered with treatment ASTM E84 Class B Unadhered BS 5852 Part 1 BS 5852 Crib 5 with treatment BS 5867 Part 2 type B EN 1021 – 1/2 EN 13501, B-s2, d0, with treatment IMO FTP Code 2010: Part 8 NF D60-013 NFPA 260 NFPA 701 with treatment ÖNORM B1/Q1 JIS L 1091 A-1 D CAN ULC S109 with treatment SN 198 898 5.3 with treatment UNI 9175 Classe 1 IM US CA TB 117-2013 - Compliant to the criteria certifying the absence of flame retardant hemicals (AB 2998) |
| APPROVED OMOLOGATO |    | | |
| CLEANING LAVAGGIO |  | | |



G

Collection / Collezione

• **kvadrat**

HERO
from G159 to G169

DESIGNER Patricia Urquiola

G 163



G 160



G 161



G 162



G 167



G 159



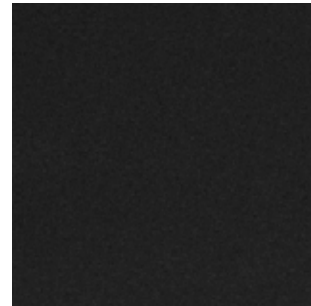
G 166



G 168



G 169



Collection / Collezione

• **kvadrat**

HERO HEATHER
from G250 to G258

DESIGNER Patricia Urquiola

G 250



G 251



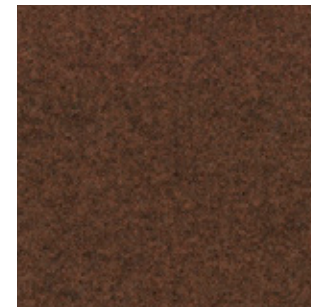
G 252



G 253



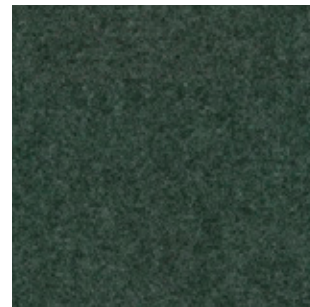
G 254



G 255



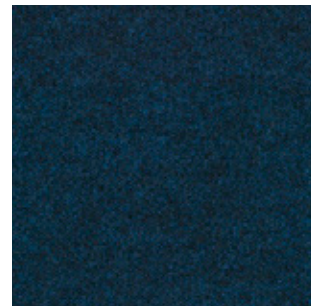
G 256



G 257



G 258



Collection / Collezione

• **kvadrat**

DIVINA MELANGE
from G21 to G24

DIVINA MD
from G111 to G116

DESIGNER Finn Sködt

G 24



G 114



G 115



G 116



G 111



G 22



G 21



Fabrics

Tessuti

category G | N

PEDRALI

G 

N 

| | G100÷G102 | G120÷G122 | G220÷G225 | G240÷G244 | N01÷N08 |
|--|---|---|---|---|--|
| COMPOSITION COMPOSIZIONE | 90% New wool 10% Nylon | 100% New wool | 52% Cotton 22% Viscose 14% Polyacrylic 6% Linen 3% Polyester 3% Nylon | 43% Viscose 17% Polyacrylic 15% New wool 9% Cotton 8% Polyester 8% Linen | 58% New wool 25% Viscose 8% Linen 5% Nylon 4% Polyester |
| WEIGHT GRAMMATURA | 365 g/m ² (10.76 oz/yd ²) | 493 g/m ² (14.54 oz/yd ²) | 745 g/m ² (21.97 oz/yd ²) | 720 g/m ² (21.23 oz/yd ²) | 420 g/m ² (12.39 oz/yd ²) |
| ABRASION ABRASIONE | 50.000 cycles Martindale (EN ISO 12947) | 75.000 cycles Martindale (EN ISO 12947) | 50.000 cycles Martindale (EN ISO 12947) | 40.000 cycles Martindale (EN ISO 12947) | 50.000 cycles Martindale (EN ISO 12947) |
| PILLING | 4, scale 1-5 (EN ISO 12945) | 3-4, scale 1-5 (EN ISO 12945) | 4-5, scale 1-5 (EN ISO 12945) | 3, scale 1-5 (EN ISO 12945) | 3, scale 1-5 (EN ISO 12945) |
| LIGHT FASTNESS SOLIDITÀ ALLA LUCE | 6-7, scale 1-8 (ISO 105-B02) | 6-7, scale 1-8 (ISO 105-B02) | 6, scale 1-8 (ISO 105-B02) | 5-6, scale 1-8 (ISO 105-B02) | 5, scale 1-8 (ISO 105-B02) |
| RUBBING FASTNESS SOLIDITÀ ALLO SFREGAMENTO | Dry and Wet 5, scale 1-5 (ISO 105-X12) | Dry 5 and Wet 4-5, scale 1-5 (ISO 105-X12) | Dry and Wet 4-5, scale 1-5 (ISO 105-X12) | Dry and Wet 4-5, scale 1-5 (ISO 105-X12) | Dry 4-5 and Wet 3-4, scale 1-5 (ISO 105-X12) |
| FLAME RESISTANCE RESISTENZA AL FUOCO | AS/NZS 3837 Class 2 BS 5852 Part 1 BS 5852 Crib 5 with treatment EN 1021 – 1/2 IMO FTP Code 2010: Part 8 NFPA 260 NF D60-013 ÖNORM B1/Q1 SN 198 898 5.3 with treatment UNI 9175 Classe 1 IM US CA TB 117-2013 - Compliant to the criteria certifying the absence of flame retardant chemicals (AB 2998) | AS/NZS 3837 Class 2 ASTM E84 Class A Adhered ASTM E84 Class B Unadhered BS 5852 Part 1 BS 5852 Crib 5 with treatment EN 1021 – 1/2 IMO FTP Code 2010: Part 8 NFPA 260 NF D60-013 ÖNORM B1/Q1 SN 198 898 5.3 with treatment UNI 9175 Classe 1 IM US CA TB 117-2013 - Compliant to the criteria certifying the absence of flame retardant chemicals (AB 2998) | AS/NZS 3837 Class 2 BS 5852 Part 1 BS 5852 Crib 5 with treatment EN 1021 – 1/2 IMO FTP Code 2010: Part 8 US CA TB 117-2013 - Compliant to the criteria certifying the absence of flame retardant chemicals (AB 2998) | AS/NZS 3837 Class 2 BS 5852 Part 1 BS 5852 Crib 5 with treatment EN 1021 – 1/2 IMO FTP Code 2010: Part 8 US CA TB 117-2013 - Compliant to the criteria certifying the absence of flame retardant chemicals (AB 2998) | AS/NZS 3837 Class 2 BS 5852 Crib 5 with treatment EN 1021 – 1/2 EN 13501, C-s1, d0, with treatment IMO FTP Code 2010: Part 8 with treatment NFPA 260 US CA TB 117-2013 - Compliant to the criteria certifying the absence of flame retardant chemicals (AB 2998) |
| APPROVED OMOLOGATO |   |  |  |  |  |
| CLEANING LAVAGGIO |  | |  |  |  |



G

Collection / Collezione

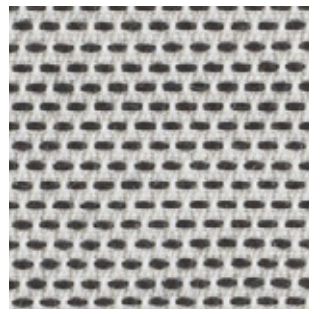
• kvadrat

BASEL

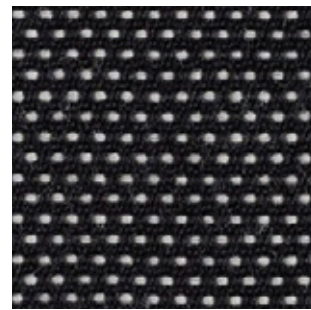
from G100 to G102

DESIGNERS Herzog & de Meuron

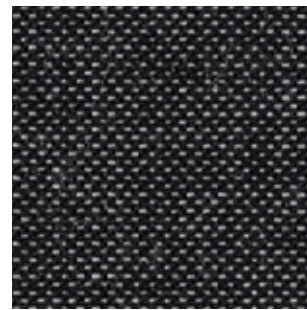
G 101



G 100



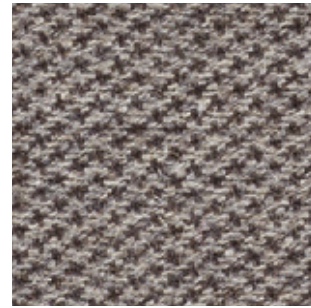
G 102



G 120



G 121



G 122



Collection / Collezione

• kvadrat

MOLLY

from G120 to G122

DESIGNER Åsa Pärson

G 225



G 220



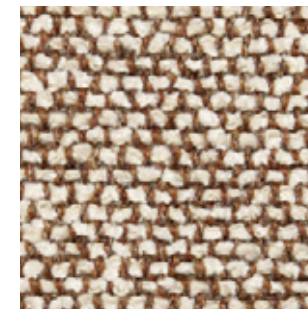
G 221



G 222



G 223



G 224



Collection / Collezione

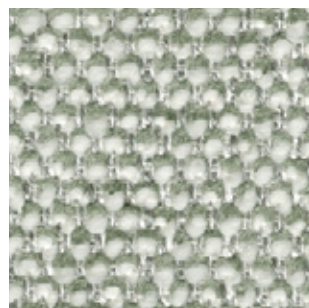
• kvadrat - SAHCO

MOSS

from G220 to G225

DESIGNER Vincent Van Duysen

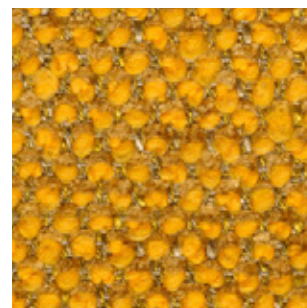
G 240



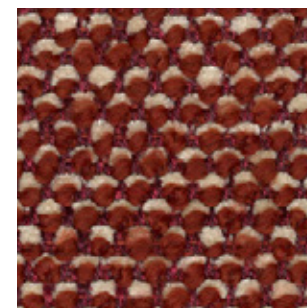
G 241



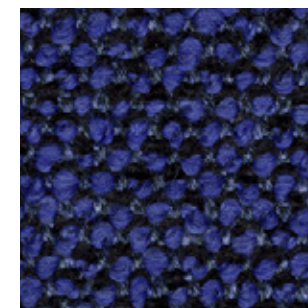
G 242



G 243



G 244



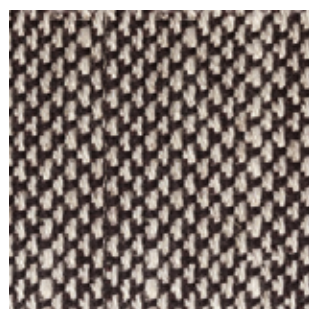
Collection / Collezione

• kvadrat - SAHCO

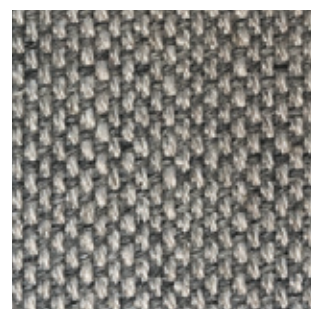
SAFIRE

from G240 to G244

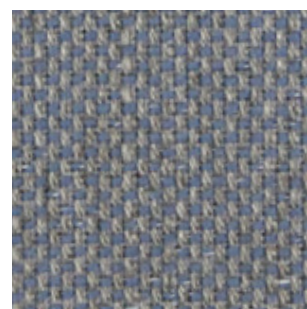
N 05



N 01



N 08



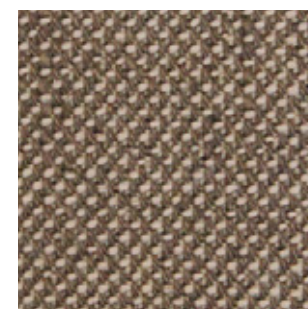
N 02



N 06



N 07



N

Collection / Collezione

• kvadrat

SUNNIVA

from N01 to N08




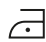
DESIGNERS Raf Simons & Fanny Aronsen

Fabrics

Tessuti

category C | G

PEDRALI

| | C  | G  | |
|--|---|---|---|
| | C110÷C122 | G150÷G156 | G130÷G133 |
| COMPOSITION COMPOSIZIONE | 85% Wool 15% Polyamide | 82% Wool 12% Rami 6% Polyamide | 95% Virgin Wool 5% Polyamide |
| WEIGHT GRAMMATURA | 330 g/m ² (9.73 oz/yd ²) | 570 g/m ² (16.81 oz/yd ²) | 660 g/m ² (19.47 oz/yd ²) |
| ABRASION ABRASIONE | 100.000 cycles Martindale (EN ISO 12947-2) | 100.000 cycles Martindale (EN ISO 12947-2) | 52.000 cycles Martindale (EN ISO 12947-2) |
| RUBBING FASTNESS SOLIDITÀ ALLO SFREGAMENTO | Dry 4 and Wet 3-4, scale 1-5 (ISO 105-X12) | Dry 4 and Wet 3-4, scale 1-5 (ISO 105-X12) | / |
| PILLING | / | / | 4-5, scale 1-5 (EN ISO 12945-2) |
| LIGHT FASTNESS SOLIDITÀ ALLA LUCE | 5-7, scale 1-8 (ISO 105-B02) | 5-7, scale 1-8 (ISO 105-B02) | 5-8, scale 1-8 (ISO 105-B02) |
| SOUND ABSORPTION ASSORBIMENTO ACUSTICO | / | / | folded: $\alpha_w = 0.85$ Class B (ISO 11654) |
| FLAME RESISTANCE RESISTENZA AL FUOCO | BS 5852 Crib 5 EN 1021 - 1/2 IMO FTP Code 2010: Part 8 UNI 9175 Classe 1 IM US CA TB 117-2013 - Compliant to the criteria certifying the absence of flame retardant chemicals (AB 2998) | BS 5852 Crib 5 EN 1021 - 1/2 IMO FTP Code 2010: Part 8 UNI 9175 Classe 1 IM US CA TB 117-2013 - Compliant to the criteria certifying the absence of flame retardant chemicals (AB 2998) | BS 5852 Part 1 BS 5852 Crib 5 DIN 4102-1 B2 EN 1021 - 1/2 EN 13501-1 FAR 25.853 (12 sec. vertical) IMO: 2014/90/EU (MED) UNI 9175 Classe 1 IM US CA TB 117-2013 - Compliant to the criteria certifying the absence of flame retardant chemicals (AB 2998) |
| APPROVED OMOLOGATO |   |  |  |
| CLEANING LAVAGGIO |      |      |    |



C

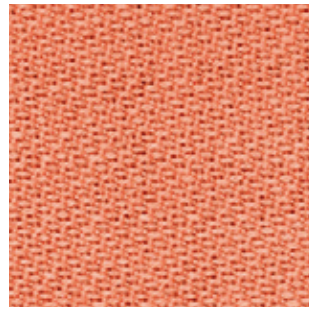
Collection / Collezione

• **svensson**

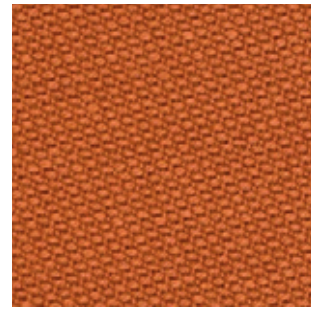
SEMI

from C110 to C122

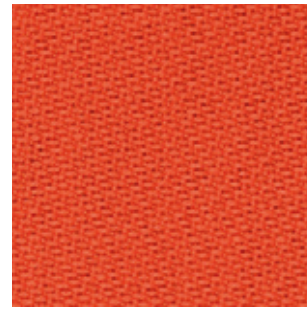
C 111



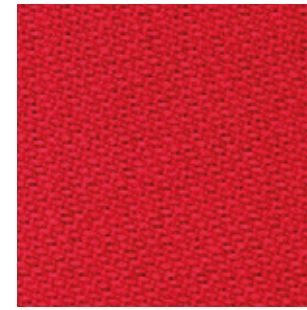
C 112



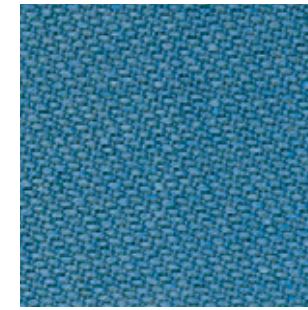
C 110



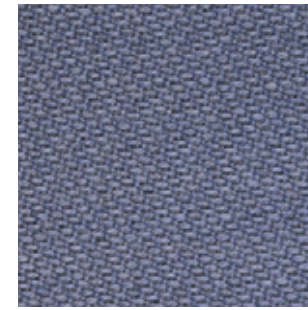
C 113



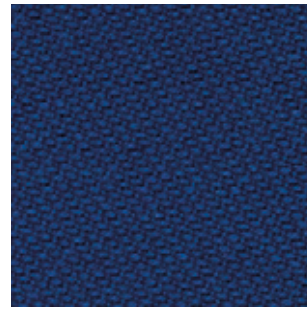
C 120



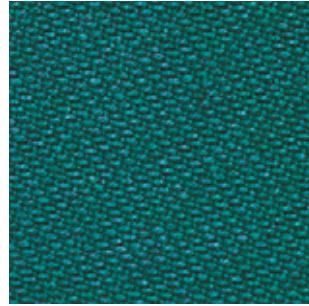
C 121



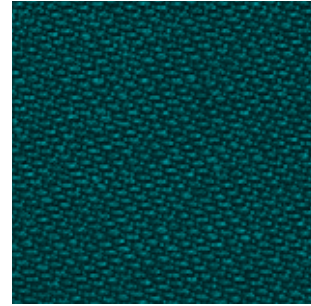
C122



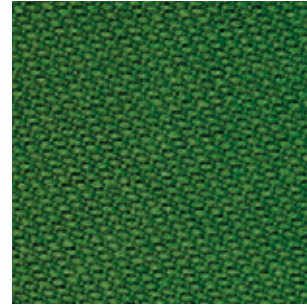
C 118



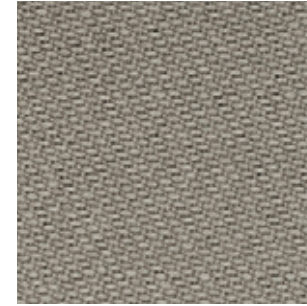
C 119



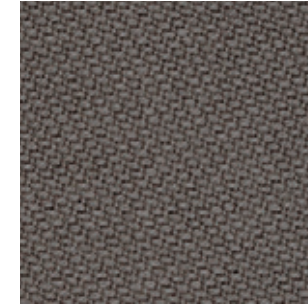
C 117



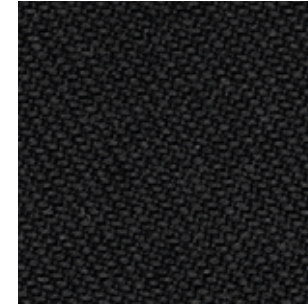
C 114



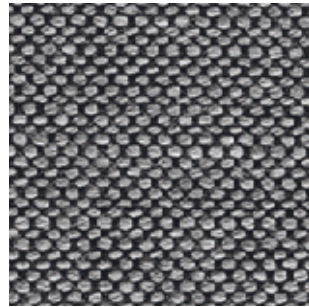
C 115



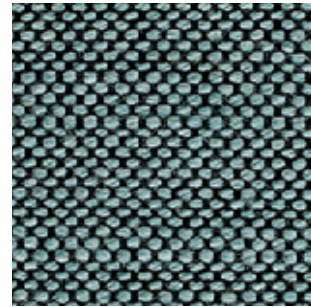
C 116



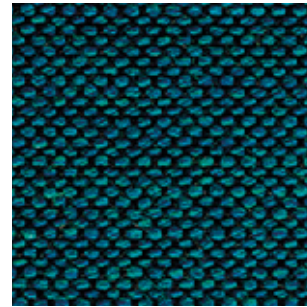
G 151



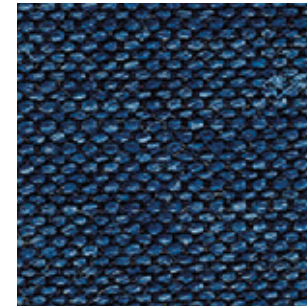
G 154



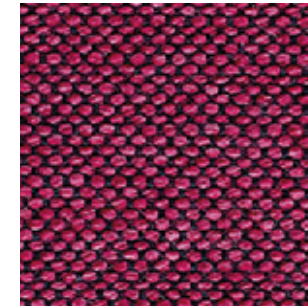
G 155



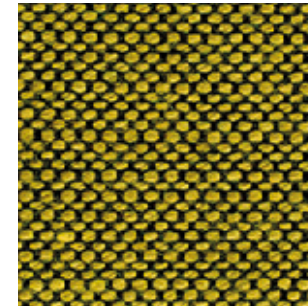
G 156



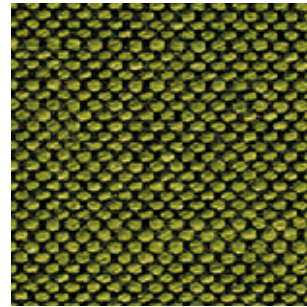
G 150



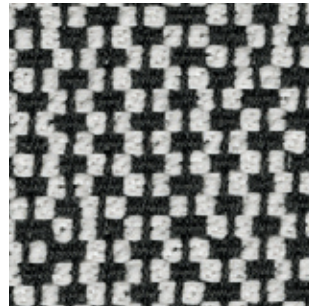
G 152



G 153



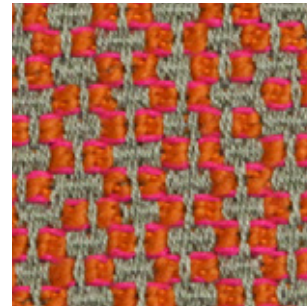
G 130



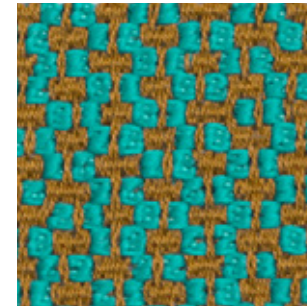
G 133



G 132



G 131



G

Collection / Collezione

• **svensson**

BALANCE

from G150 to G156

Fabrics

Tessuti

category C | D | G

PEDRALI

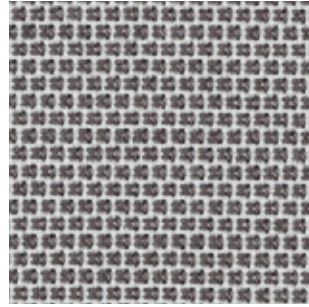
FABRICS / TESSUTI

| | C  | D  | G  |
|--|--|---|---|
| | C83÷C89 C100, C101 | D40÷D44 | G170÷G176 G210÷G213 |
| COMPOSITION COMPOSIZIONE | 54% New Zealand Wool 44% Post-consumer recycled polyester 2% Polyamide | 88% New Zealand Wool 12% Polyamide | 96% Virgin Wool 4% Polyamide |
| WEIGHT GRAMMATURA | 307 g/m ² (9.05 oz/yd ²) | 420 g/m ² (12.39 oz/yd ²) | 660 g/m ² (19.47 oz/yd ²) |
| ABRASION ABRASIONE | 100.000 cycles Martindale (EN ISO 12947-2) | 100.000 cycles Martindale (EN ISO 12947-2) | 90.000 cycles Martindale (EN ISO 12947-2) |
| RUBBING FASTNESS SOLIDITÀ ALLO SFREGAMENTO | Dry and Wet 4-5, scale 1-5 (ISO 105-X12) | Dry and Wet 4-5, scale 1-5 (ISO 105-X12) | / |
| PILLING | 4-5, scale 1-5 (EN ISO 12945-2) | 4-5, scale 1-5 (EN ISO 12945-2) | 4-5, scale 1-5 (EN ISO 12945-2) |
| LIGHT FASTNESS SOLIDITÀ ALLA LUCE | 5-7, scale 1-8 (ISO 105-B02) | 5-7, scale 1-8 (ISO 105-B02) | 5, scale 1-8 (ISO 105-B02) |
| SOUND ABSORPTION ASSORBIMENTO ACUSTICO | / | / | folded: $\alpha_w=0.95$ Class A (ISO 11654) |
| FLAME RESISTANCE RESISTENZA AL FUOCO | EN 1021 – 1/2 EN 1021-1 ÖNORM A3800-1 US CA TB 117-2013 - Compliant to the criteria certifying the absence of flame retardant chemicals (AB 2998) | ASTM E84 Class 2 EN 1021 – 1/2 BS 5852 Part 1 0, 1 NF D60-013 UNI 9175 Classe 1 IM US CA TB 117-2013 - Compliant to the criteria certifying the absence of flame retardant chemicals (AB 2998) | BS 5852 Part 1 BS 5852 Crib 5 with treatment DIN 4102-1 B2 with treatment EN 13501-1 with treatment EN 1021 – 1/2 FAR 25.853 (12 sec. vertical) with treatment IMO: 2014/90/EU (MED) UNI 9175 Classe 1 IM US CA TB 117-2013 - Compliant to the criteria certifying the absence of flame retardant chemicals (AB 2998) |
| APPROVED OMOLOGATO |  |  |  |
| CLEANING LAVAGGIO |  |  |  |

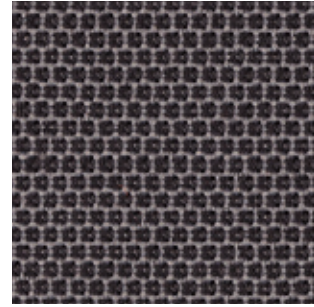


C

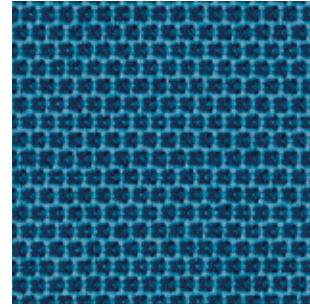
C 101



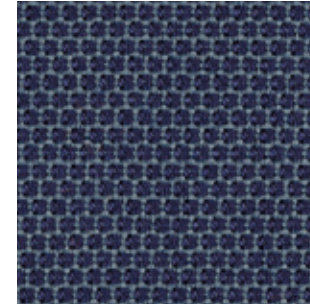
C 86



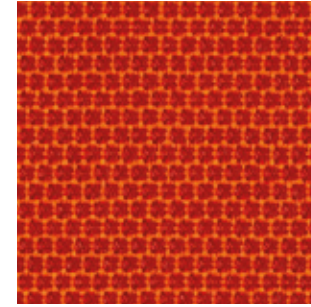
C 83



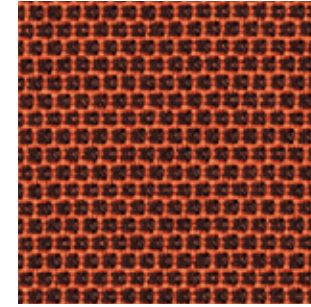
C 100



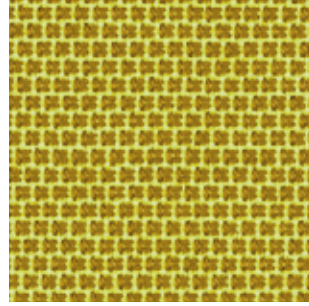
C 85



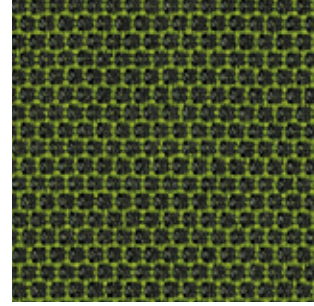
C 89



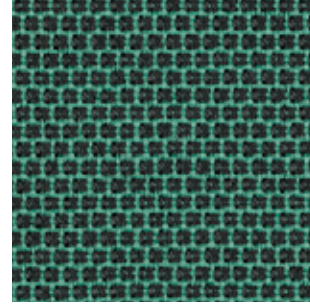
C 87



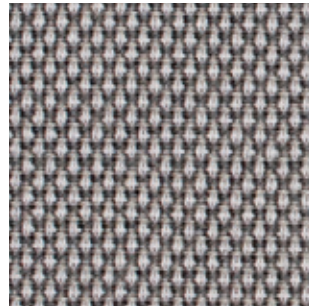
C 84



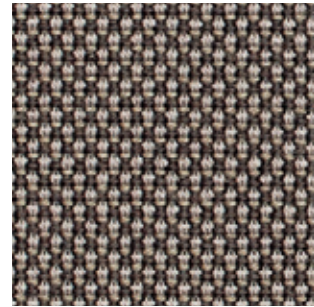
C 88



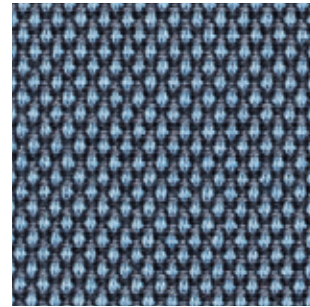
D 40



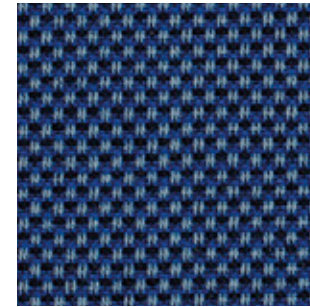
D 41



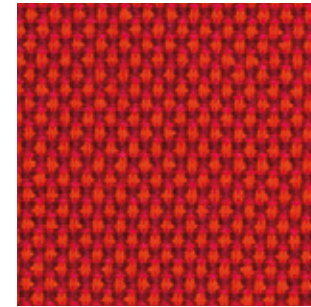
D 43



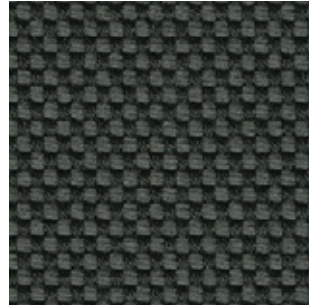
D 44



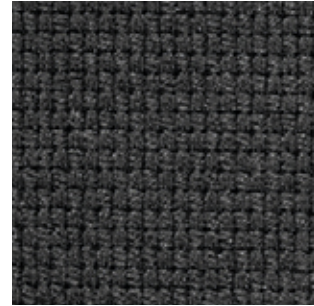
D 42



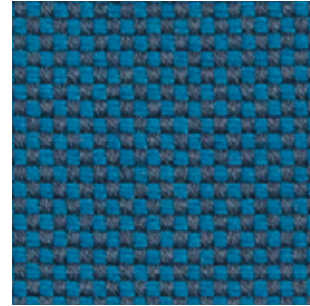
G 175



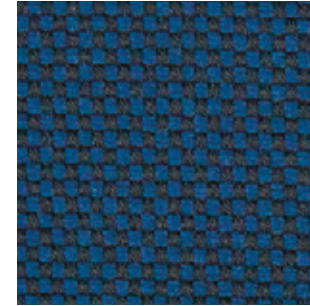
G 176



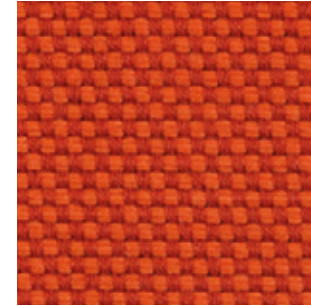
G 173



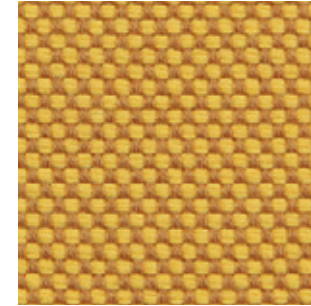
G 174



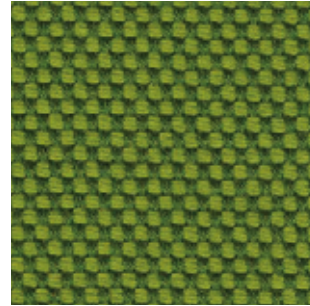
G 170



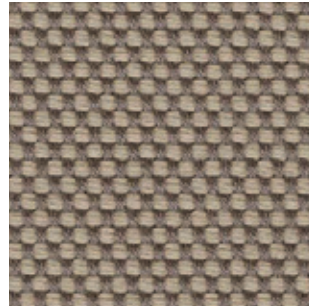
G 171



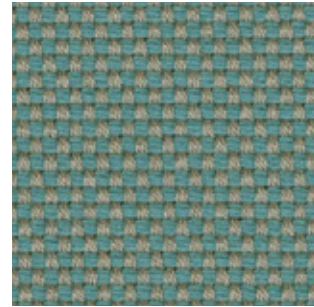
G 172



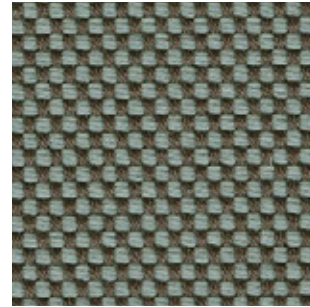
G 211



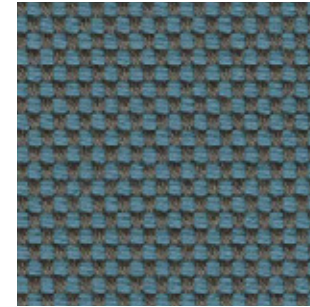
G 210



G 213



G 212



D



G






Fabrics

Tessuti

category G | H | C

PEDRALI

FABRICS / TESSUTI

| | G  | H  | C  | |
|--|---|---|---|---|
| | G200÷G206 | G140÷G146 | H120÷H127 | C210÷C217 |
| COMPOSITION COMPOSIZIONE | 92% New wool 8% Nylon | 45% Recycled wool 45% New wool 10% Nylon | 90% New Wool 10% Nylon | 100% TREVIRA CS® |
| WEIGHT GRAMMATURA | 370 g/m ² (10.91 oz/yd ²) | 385 g/m ² (11.35 oz/yd ²) | 300 g/m ² (8.85 oz/yd ²) | 320 g/m ² (9.47 oz/yd ²) |
| ABRASION ABRASIONE | 80.000 cycles Martindale (EN ISO 12947) | 100.000 cycles Martindale (EN ISO 12947) | 100.000 cycles Martindale (EN ISO 12947) | 80.000 cycles Martindale (EN ISO 12947) |
| RUBBING FASTNESS SOLIDITÀ ALLO SFREGAMENTO | Dry and Wet 5, scale 1-5 (ISO 105-X12) | Dry 4-5 and Wet 4, scale 1-5 (ISO 105-X12) | Dry and Wet 4, scale 1-5 (ISO 105-X12) | Dry and Wet 5, scale 1-5 (ISO 105-X12) |
| PILLING | 4, scale 1-5 (EN ISO 12945) | 4, scale 1-5 (EN ISO 12945) | 4, scale 1-5 (EN ISO 12945) | 4-5, scale 1-5 (EN ISO 12945) |
| LIGHT FASTNESS SOLIDITÀ ALLA LUCE | 6-7, scale 1-8 (ISO 105-B02) | 6, scale 1-8 (ISO 105-B02) | 6, scale 1-8 (ISO 105-B02) | 6-7, scale 1-8 (ISO 105-B02) |
| SOUND ABSORPTION ASSORBIMENTO ACUSTICO | / | folded: $\alpha_w=0.75$ Class C (EN ISO 354) | folded: $\alpha_w=0.80$ Class B (EN ISO 354) | folded: $\alpha_w=0.70$ Class C (EN ISO 354) |
| FLAME RESISTANCE RESISTENZA AL FUOCO | AS/NZS 1530.3 AS/NZS 3837 Class 2 BS 5852 Part 1 BS 5852 Crib 5 with treatment EN 1021 – 1/2 IMO FTP Code 2010: Part 8 NF D60-013 SN 198 898 5.3 with treatment UNI 9175 Classe 1 IM US CA TB 117-2013 - Compliant to the criteria certifying the absence of flame retardant chemicals (AB 2998) | AS/NZS 1530.3 AS/NZS 3837 Class 2 BS 5852 Part 1 BS 5852 Crib 5 with treatment EN 1021 – 1/2 EN 13501, B-s2, d0, with treatment IMO FTP Code 2010: Part 8 NF D60-013 SN 198 898 5.3 with treatment ÖNORM B1/Q1 UNI 9175 Classe 1 IM US CA TB 117-2013 - Compliant to the criteria certifying the absence of flame retardant chemicals (AB 2998) | AS/NZS 1530.3 AS/NZS 3837 Class 2 ASTM E84 Class A Adhered ASTM E84 Class A Unadhered BS 5852 Part 1 BS 5852 Crib 5 with treatment EN 1021 – 1/2 EN 13501, B-s2, d0, with treatment GB 50222 B1 with treatment IMO FTP Code 2010: Part 7 with treatment IMO FTP Code 2010: Part 8 NF D60-013 NFPA 260 ÖNORM B1/Q1 SN 198 898 5.3 with treatment UNI 9175 Classe 1 IM US CA TB 117-2013 - Compliant to the criteria certifying the absence of flame retardant chemicals (AB 2998) | AS/NZS 3837 Class 2 ASTM E84 Class B Adhered ASTM E84 Class A Unadhered BS 5852 Crib 5 with treatment BS 5852 Part 1 with treatment BS 5867 Part 2 type B DIN 4102 B1 EN 1021 – 1/2 EN 13501-1, B-s1, d0 GB 8624 B1 FAR 25.853 IMO FTP Code 2010: Part 8 IMO FTP Code 2010: Part 5 NF D60-013 NF P92 507 M1 NFPA 701 ÖNORM B1/Q1 CAN ULC S102 S109 SN 198 898 5.2 UNI 9177 Classe 1 UNI 9175 Classe 1 IM US CA TB 117-2013 |
| APPROVED OMOLOGATO |    | | | PRODUCT CERTIFIED FOR LOW CHEMICAL EMISSIONS: UL COM/IGG UL 2819 170166-420 |
| CLEANING LAVAGGIO |  | | |  |



G

Collection / Collezione

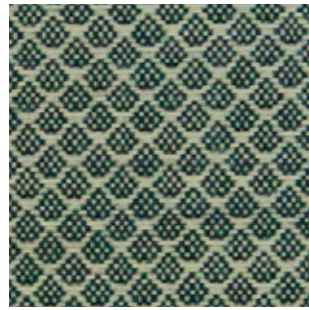
• kvadrat

JAALI

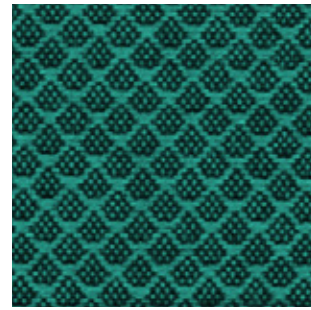
from G200 to G206

DESIGNER Doshi Levien

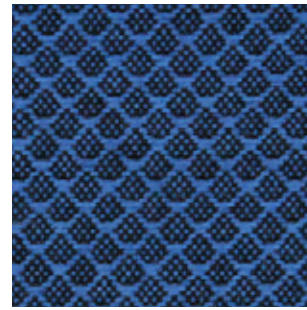
G 204



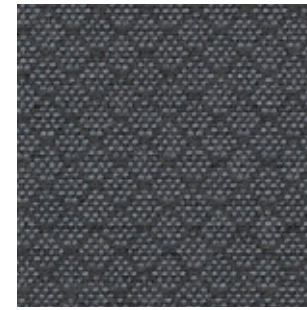
G 205



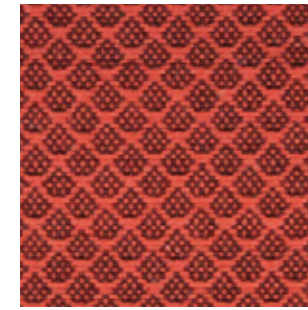
G 203



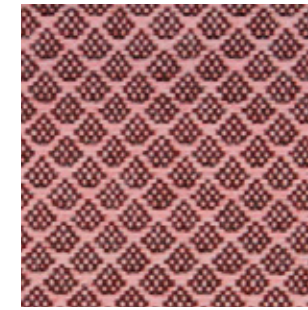
G 206



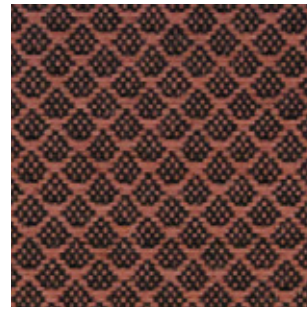
G 200



G 201



G 202



Collection / Collezione

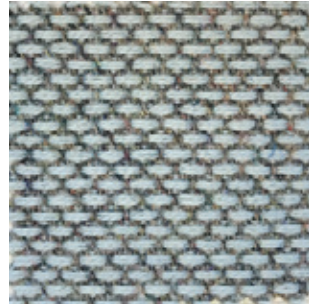
• kvadrat

RE-WOOL

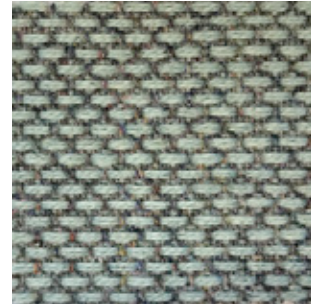
from G140 to G146

DESIGNER Margrethe Odgaard

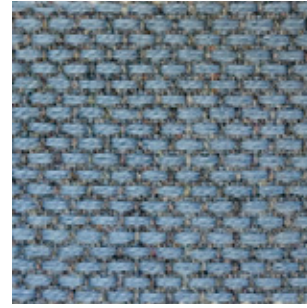
G 143



G 145



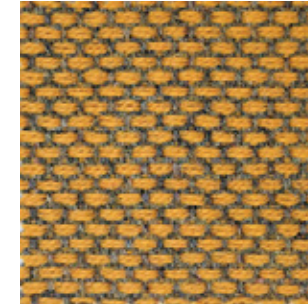
G 144



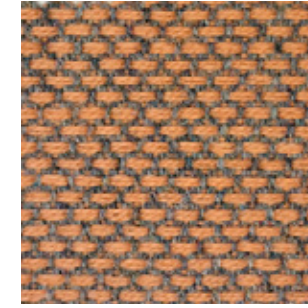
G 146



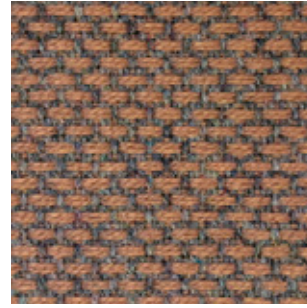
G 140



G 141



G 142



H

Collection / Collezione

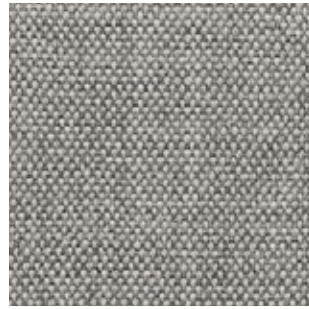
• kvadrat

REMIX

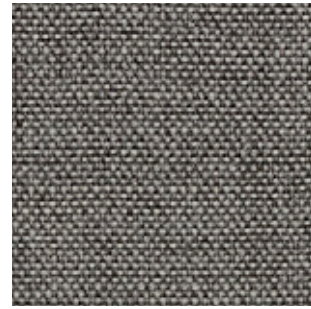
from H120 to H127

DESIGNER Giulio Ridolfo

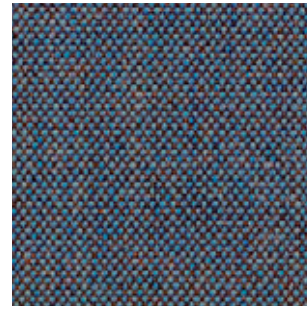
H 120



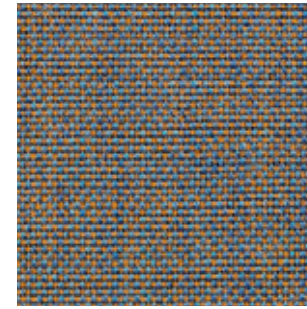
H 121



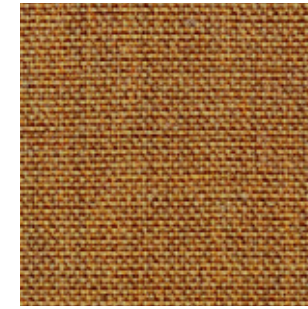
H 123



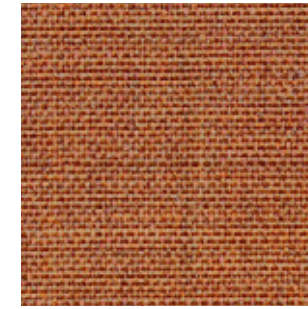
H 122



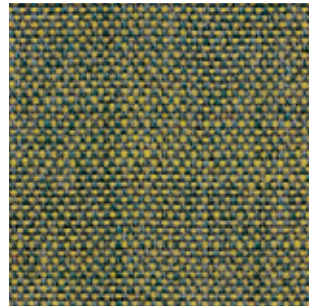
H 125



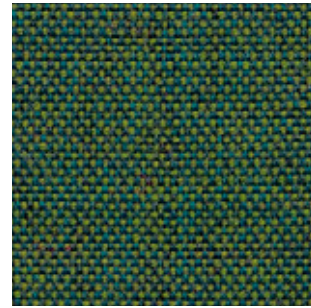
H 124



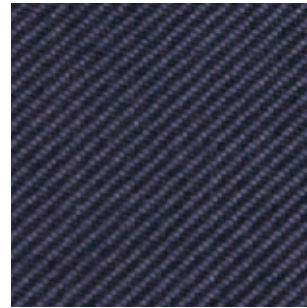
H 126



H 127



C 216



C

Collection / Collezione

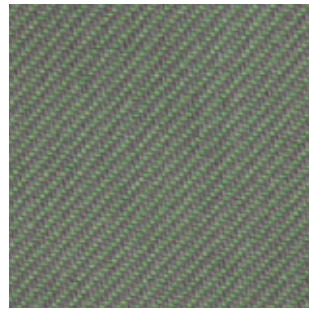
• kvadrat

RELATE

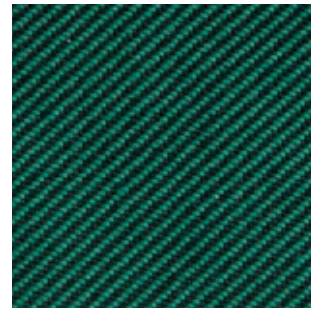
from C210 to C217

DESIGNER Patricia Urquiola

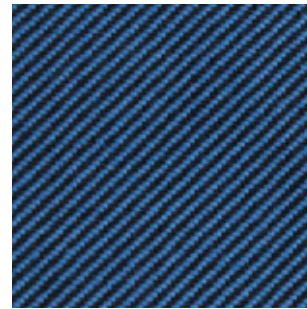
C 210



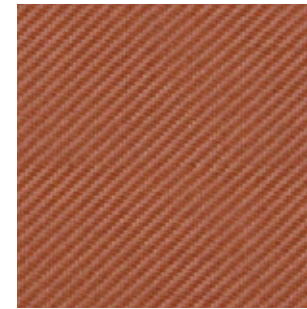
C 211



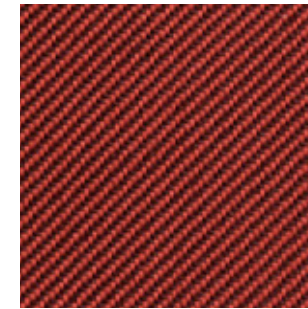
C 217



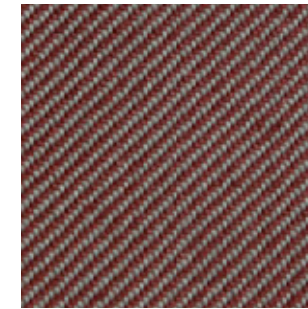
C 212



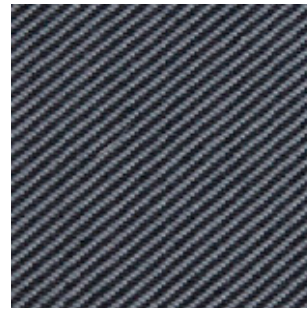
C 213



C 214



C 215



Fabrics

Tessuti

category D | H | N | C

FABRICS / TESSUTI

| | D | H | N  | C |
|---|--|---|---|---|
| | D120÷D123 | H140÷H143 | N30÷N38 | C36÷C39 |
| COMPOSITION COMPOSIZIONE | 22% Acrylic 22% Virgin Wool 22% Polyester 14% Viscose 13% Cotton 7% Linen | 35% Wool 35% Acrylic 23% Polyester 7% Cotton | 65% Wool 32% Cotton 3% Polyamide | 94% Cotton 6% Polyamide |
| WEIGHT GRAMMATURA | 580 g/m ² (17.11 oz/yd ²) | 414 g/m ² (12.21 oz/yd ²) | 746 g/m ² (22.00 oz/yd ²) | 480 g/m ² (14.16 oz/yd ²) |
| ABRASION ABRASIONE | 30.000 cycles Martindale (EN ISO 12947-2) | 40.000 cycles Martindale (EN ISO 12947-2) | 80.000 cycles Martindale (EN ISO 12947-2) | 40.000 cycles, Martindale (EN ISO 12947-2) |
| PILLING | 4, scale 1-5 (EN ISO 12945-2 to 5.000 rubs) | 3-4, scale 1-5 (EN ISO 12945-2 to 5.000 rubs) | 4-5, scale 1-5 (EN ISO 12945 to 5.000 rubs) | 4, scale 1-5 (EN ISO 12945-2 to 5.000 rubs) |
| RUBBING FASTNESS SOLIDITÀ ALLO SFREGAMENTO | Dry 4-5 and Wet 3, scale 1-5 (ISO 105-X12) | Dry 4-5 and Wet 3, scale 1-5 (ISO 105-X12) | Dry 4-5 and Wet 3-4, scale 1-5 (ISO 105-X12) | Dry 4-5 and Wet 2-3, scale 1-5 (ISO 105-X12) |
| LIGHT FASTNESS SOLIDITÀ ALLA LUCE | 5-6, scale 1-8 (ISO 105-B02) | 5-6, scale 1-8 (ISO 105-B02) | 4-5, scale 1-8 (ISO 105-B02) | 4-5, scale 1-8 (ISO 105-B02) |
| FLAME RESISTANCE RESISTENZA AL FUOCO | BS 5852 Part 1 US CA TB 117-2013 - Compliant to the criteria certifying the absence of flame retardant chemicals (AB 2998) | EN 1021-1 BS 5852 Part 1 US CA TB 117-2013 - Compliant to the criteria certifying the absence of flame retardant chemicals (AB 2998) | BS 5852 Part 1 BS 5852 Crib 5 EN 1021 - 1/2 UNI 9175 Classe 1 IM US CA TB 117-2013 - Compliant to the criteria certifying the absence of flame retardant chemicals (AB 2998) | / |
| CLEANING LAVAGGIO |  | |  |  |

PEDRALI

D

D 120



D 121



D 122



D 123



H

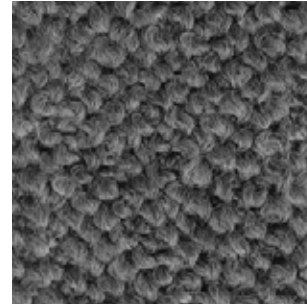
H 143



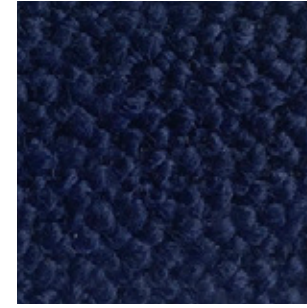
H 140



H 141



H 142



N

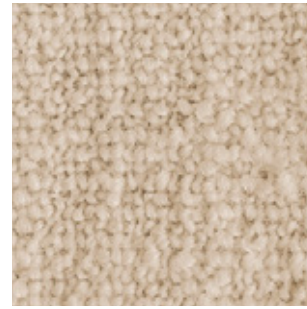
N 30



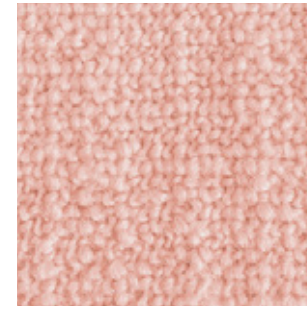
N 31



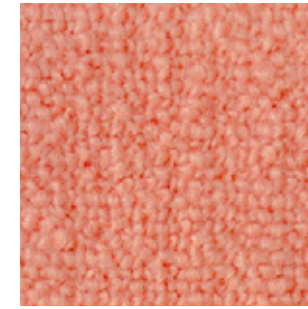
N 32



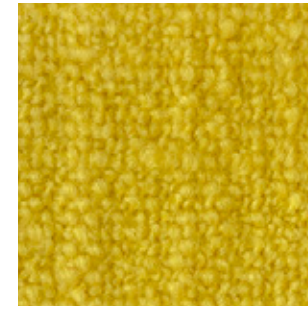
N 33



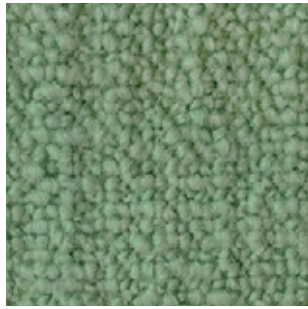
N 34



N 35



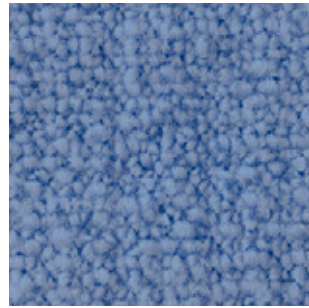
N 36



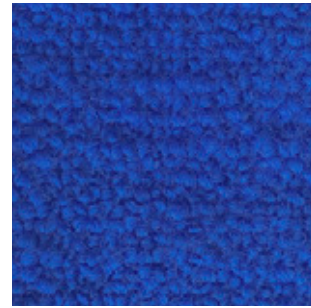
Collection / Collezione

• DEDAR
MILANO
A PERFECT FLOWER
from N30 to N38

N 37

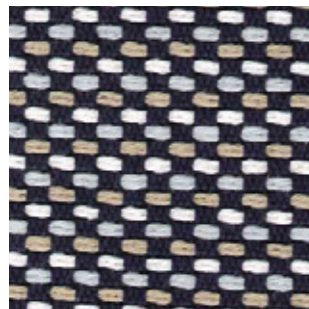


N 38

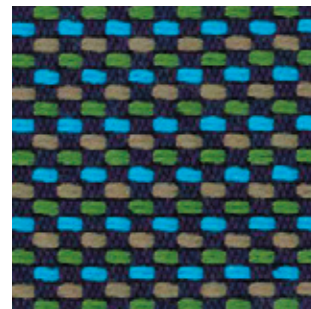


C

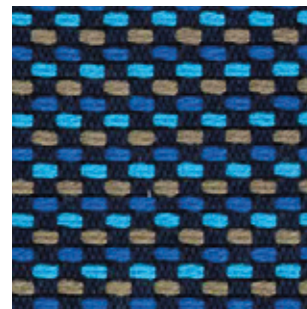
C 37



C 38



C 39



C 36



Fabrics

Tessuti

category D | N 

PEDRALI




FABRICS / TESSUTI

D 

only for outdoor collections cushions / solo per cuscini delle collezioni outdoor

N 

only for outdoor accessory cushions / solo per cuscini accessori outdoor

| | D80÷D89 | D130÷D133 | N40÷N45 |
|--|---|---|---|
| COMPOSITION COMPOSIZIONE | 100% Acrylic | 100% Polypropylene | 100% Acrylic |
| WEIGHT GRAMMATURA | 290 g/m ² (8.55 oz/yd ²) | 470 g/m ² (13.86 oz/yd ²) | 380 g/m ² (11.21 oz/yd ²) |
| ABRASION ABRASIONE | > 20.000 cycles, Martindale (EN ISO 5470-2) | 40.000 cycles, Martindale (EN ISO 12947-2) | 24.000 cycles, Martindale (EN ISO 12947-2) |
| RUBBING FASTNESS SOLIDITÀ ALLO SFREGAMENTO | / | Dry 4-5 and Wet 4, scale 1-5 (ISO 105-X12) | Dry and Wet 4-5, scale 1-5 (ISO 105-X12) |
| PILLING | / | 4-5, scale 1-5 (EN ISO 12945-2 to 5.000 rubs) | 3-4, scale 1-5 (EN ISO 12945 to 5.000 rubs) |
| LIGHT FASTNESS SOLIDITÀ ALLA LUCE | 8, scale 1-8 (ISO 105-B04) | 7-8, scale 1-8 (ISO 105-B02) | 6-7, scale 1-8 (ISO 105-B02) |
| WATER FASTNESS SOLIDITÀ ALL'ACQUA | 8, scale 1-8 (ISO 105-B04) | 7, scale 1-8 (ISO 105-B04) | 7-8, scale 1-8 (ISO 105-B04) |
| FLAME RESISTANCE RESISTENZA AL FUOCO | / | BS 5852 Part 1 US CA TB 117-2013 - Compliant to the criteria certifying the absence of flame retardant chemicals (AB 2998) | US CA TB 117-2013 - Compliant to the criteria certifying the absence of flame retardant chemicals (AB 2998) |
| APPROVED OMOLOGATO |  | / | / |
| CLEANING LAVAGGIO |  |  |  |



D

only for outdoor collections
cushions / solo per cuscini
delle collezioni outdoor

Collection / Collezione

• **PEDRALI**

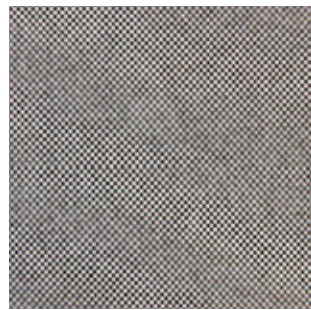
FLORIDA

from D80 to D89

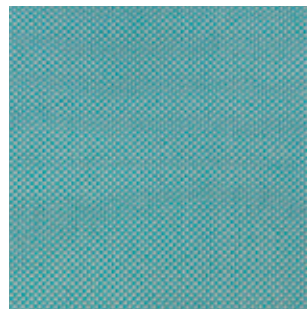
D 80



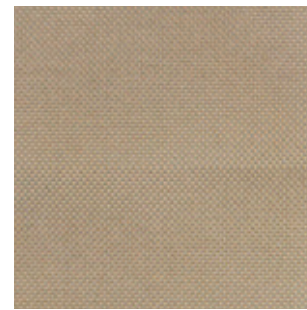
D 81



D 82



D 83



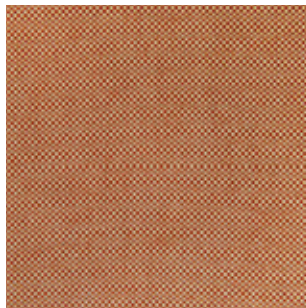
D 84



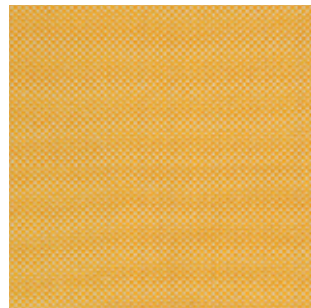
D 85



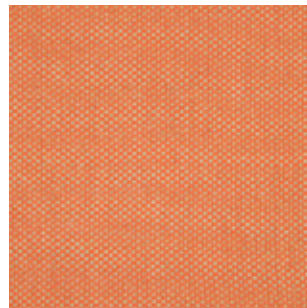
D 86



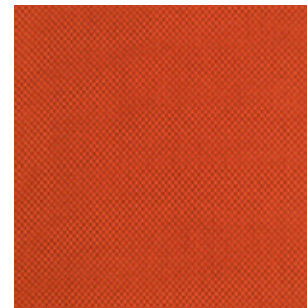
D 87



D 88



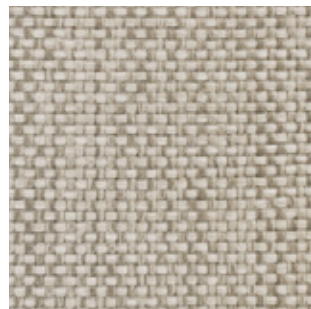
D 89



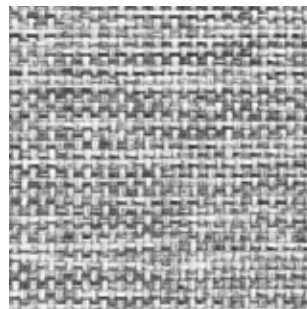
D 130



D 132



D 131



D 133



N

only for outdoor accessory
cushions / solo per cuscini
accessori outdoor

Collection / Collezione

• **DEDAR**

STRANGE LOVES

from N40 to N45

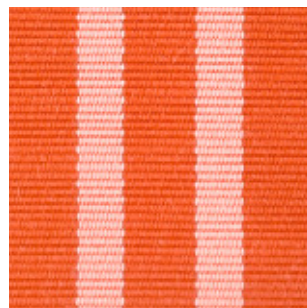
N 40



N 41



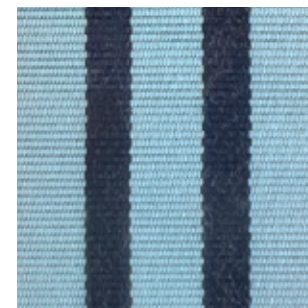
N 42



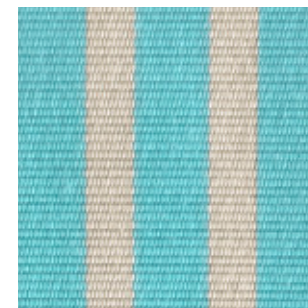
N 45



N 44



N 43

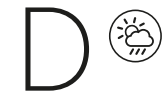


Fabrics



Tessuti

category D 

PEDRALI



only for outdoor collections cushions
solo per cuscini delle collezioni outdoor

| | D140÷D144 | D22÷D26 | D110÷D115 | D100÷D105 |
|---|--|---|--|--|
| COMPOSITION COMPOSIZIONE | 100% Polypropylene | 100% Polypropylene | 88% Polypropylene 12% Polyester | 100% Polypropylene |
| WEIGHT GRAMMATURA | 520 g/m ² (15.34 oz/yd ²) | 614 g/m ² (18.11 oz/yd ²) | 470 g/m ² (13.86 oz/yd ²) | 430 g/m ² (12.68 oz/yd ²) |
| ABRASION ABRASIONE | 62.000 cycles, Martindale (EN ISO 13936-2) | > 30.000 cycles, Martindale (EN ISO 12947-2) | 30.000 cycles, Martindale (EN ISO 12947-2) | 50.000 cycles, Martindale (EN ISO 12947-2) |
| RUBBING FASTNESS SOLIDITÀ ALLO SFREGAMENTO | / | Dry and Wet 4-5, scale 1-5 (ISO 105-X12) | Dry 4-5 and Wet 4, scale 1-5 (ISO 105-X12) | Dry and Wet 4-5, scale 1-5 (ISO 105-X12) |
| PILLING | 4, scale 1-5 (EN ISO 12945-2 to 5.000 rubs) | 5, scale 1-5 (EN ISO 12945-2 to 5.000 rubs) | 4, scale 1-5 (EN ISO 12945-2 to 5.000 rubs) | 4-5, scale 1-5 (EN ISO 12945-2) |
| LIGHT FASTNESS SOLIDITÀ ALLA LUCE | 7, scale 1-8 (ISO 105-B02) | 7, scale 1-8 (ISO 105-B02) | 7-8, scale 1-8 (ISO 105-B02) | 7, scale 1-8 (ISO 105-B02) |
| WATER FASTNESS SOLIDITÀ ALL'ACQUA | 7, scale 1-8 (ISO 105-B04) | 5, scale 1-5 (ISO 105-E01) | 7, scale 1-8 (ISO 105-B04) | >7, scale 1-8 (ISO 105-B04) |
| FLAME RESISTANCE RESISTENZA AL FUOCO | BS 5852 Part 0,1 US CA TB 117-2013 - Compliant to the criteria certifying the absence of flame retardant chemicals (AB 2998) | BS 5852 Part 1 US CA TB 117-2013 | BS 5852 Part 1 US CA TB 117-2013 - Compliant to the criteria certifying the absence of flame retardant chemicals (AB 2998) | US CA TB 117-2013 - Compliant to the criteria certifying the absence of flame retardant chemicals (AB 2998) |
| CLEANING LAVAGGIO |  | |  |  |



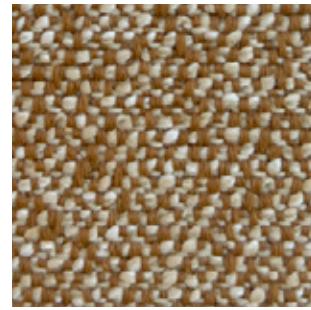
D

only for outdoor collections
cushions / solo per cuscini
delle collezioni outdoor

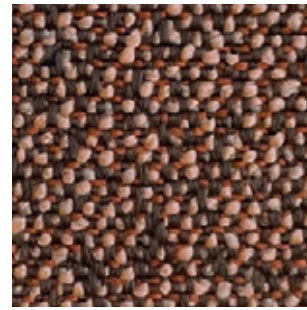
D 140



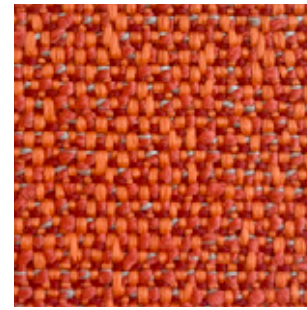
D 141



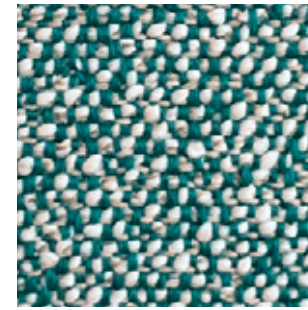
D 142



D 143



D 144



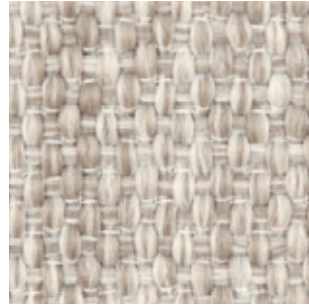
Collection / Collezione

• **PEDRALI**

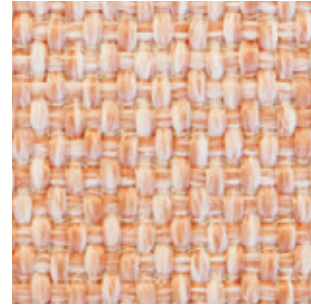
BREZZA

from D22 to D26

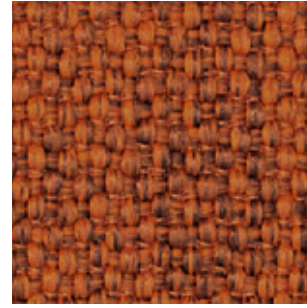
D 22



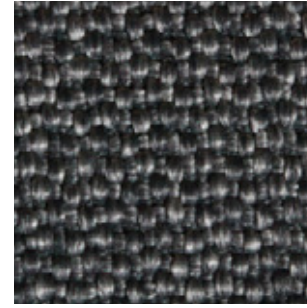
D 23



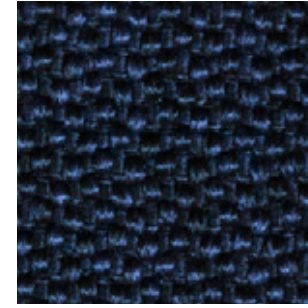
D 24



D 25



D 26



Collection / Collezione

• **PEDRALI**

SAND

from D110 to D115

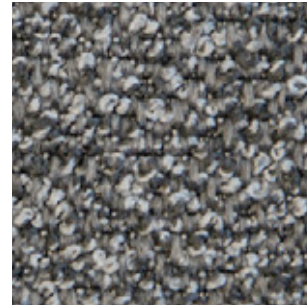
D 110



D 111



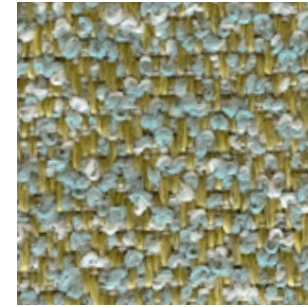
D 112



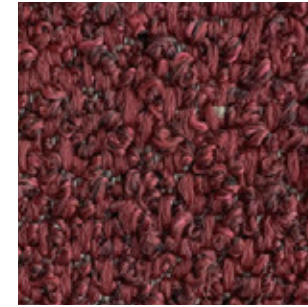
D 113



D 114



D 115



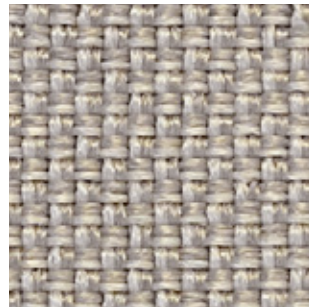
Collection / Collezione

• **PEDRALI**

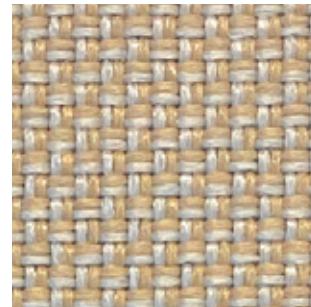
ZEFIRO

from D100 to D105

D 100



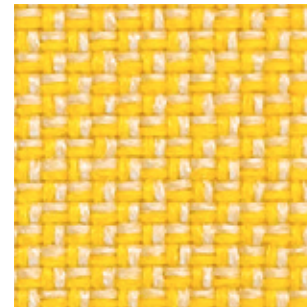
D 101



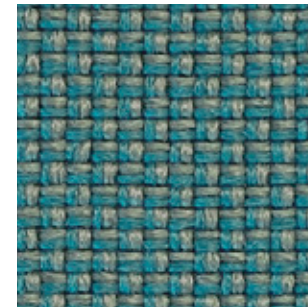
D 105



D 102



D 103



D 104




Simil Leather

Finta Pelle

category C

PEDRALI®

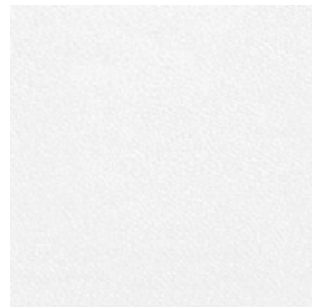
SIMIL LEATHER / FINTA PELLE

| | C90+C95 C60+C64 | C130+C141 | C10+C22 |
|--|---|---|--|
| COMPOSITION COMPOSIZIONE | 72% PVC 25% Cotton 3% Polyurethane | 76% PVC 22% Polyester 2% Polyurethane | 85% PVC 15% Cotton |
| WEIGHT GRAMMATURA | 600 g/m ² (17.70 oz/yd ²) | 540 g/m ² (15.93 oz/yd ²) | 830 g/m ² (24.48 oz/yd ²) |
| ABRASION ABRASIONE | 100.000 cycles Martindale (EN ISO 5470-2) | 60.000 cycles Martindale (EN ISO 5470-2) | 150.000 cycles Martindale (EN ISO 5470-2) |
| RUBBING FASTNESS SOLIDITÀ ALLO SFREGAMENTO | Dry and Wet 5, scale 1-5 (ISO 105-X12) | Dry and Wet 5, scale 1-5 (ISO 105-X12) | / |
| LIGHT FASTNESS SOLIDITÀ ALLA LUCE | 6-7, scale 1-8 (ISO 105-B02) | 6-7, scale 1-8 (ISO 105-B02) | ≥6, scale 1-8 (ISO 105-B02) |
| FLAME RESISTANCE RESISTENZA AL FUOCO | BS 5852 Part 1 EN 1021 – 1/2 IMO res. A.652 (16) UNI 9175 Classe 1 IM US CA TB 117-2013 | BS 5852 Part 1 EN 1021 – 1/2 UNI 9175 Classe 1 IM US CA TB 117-2013 | DIN 4102-1 B2 BS 5852 Crib 5 EN 1021 – 1/2 EN 13501-1, C-s3, d0 FAR 25.853 App F Part 1 IMO res. A.652 NF D60-013 AM18 NF P92 507 M1 NY/NJ - Port Authority UFAC Fabric Class 1 German fire standard B1 (except C12 and C22) US CA TB 133 US CA TB 117-2013 |
| APPROVED OMOLOGATO | / | / |  |
| CLEANING LAVAGGIO |  |  |  |



C

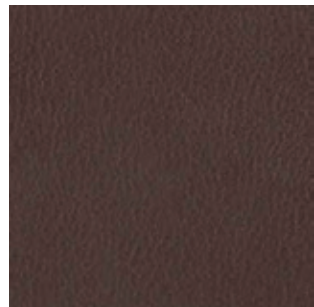
C 90



C 94



C 95



C 93



C 91



C 92



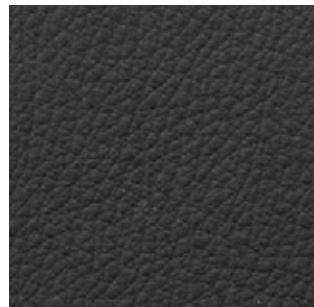
C 139



C 140



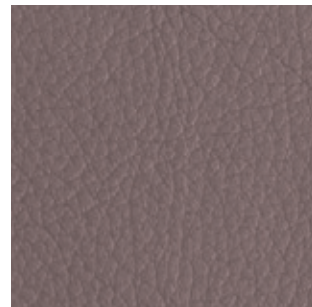
C 141



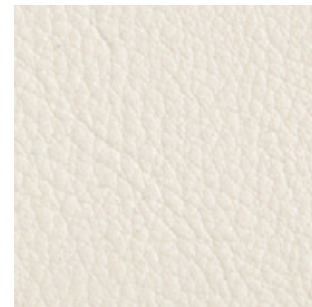
C 134



C 133



C 130



C 131



C 132



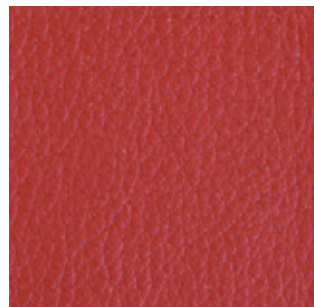
C 135



C 136



C 137



C 138



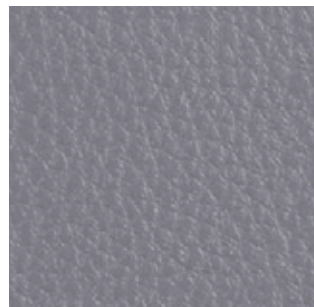
C 14



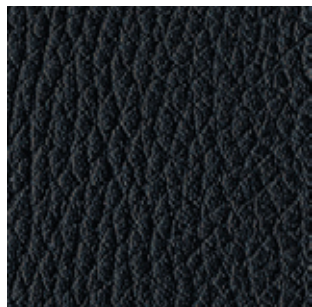
C 21



C 15



C 17



C 13



C 12



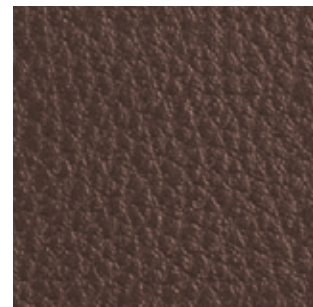
C 20



C 11



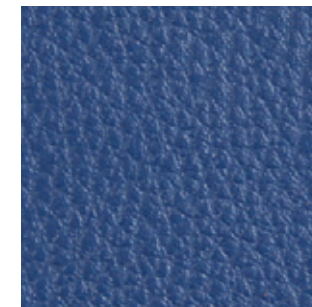
C 18



C 22



C 10



C 62



C 63



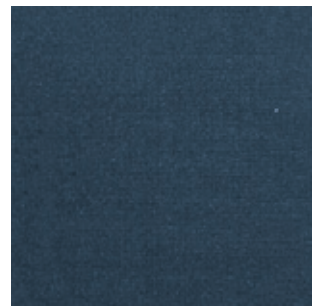
C 60



C 61



C 64






Simil Leather

Finta Pelle

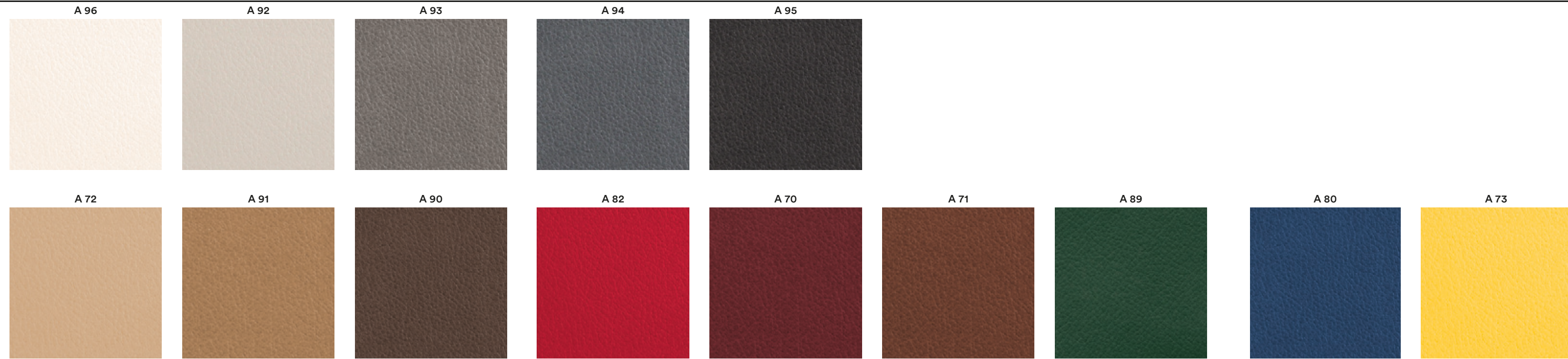
category A | H

PEDRALI®

SIMIL LEATHER / FINTA PELLE

| | A | H  |
|--|---|---|
| | A70÷A96 | H20÷H35 H100÷H108 |
| COMPOSITION COMPOSIZIONE | 85% PVC 15% Polyester | 63% Polyurethane 29% Cotton 8% Polyester |
| WEIGHT GRAMMATURA | 550 g/m ² (16.22 oz/yd ²) | 480 g/m ² (14.16 oz/yd ²) |
| ABRASION ABRASIONE | 50.000 cycles Martindale (EN ISO 5470-2) | 150.000 cycles Martindale (EN ISO 12947-2) |
| RUBBING FASTNESS SOLIDITÀ ALLO SFREGAMENTO | Dry and Wet 5, scale 1-5 (ISO 105-X12) | / |
| LIGHT FASTNESS SOLIDITÀ ALLA LUCE | 6, scale 1-8 (ISO 105-B02) | 5-6, scale 1-8 (ISO 105-B02) |
| FLAME RESISTANCE RESISTENZA AL FUOCO | BS 5852 Part 1 US CA TB 117-2013 - Compliant to the criteria certifying the absence of flame retardant chemicals (AB 2998) | BS 5852 Part 1 BS 5852 Crib 5 EN 1021 - 1/2 IMO FTP Code 2010 ONORM B 3825 UNI 9175 Classe 1 IM US CA TB 117-2013 - Compliant to the criteria certifying the absence of flame retardant chemicals (AB 2998) |
| CLEANING LAVAGGIO |  |  |

A



H



Leather



Pelle

category P

PEDRALI

LEATHER / PELLE

P

| | PBI, PLA, PGC, PSA, PGA, PBE, PGN, PTA, PTE, PRO, PGR, PMA, PNE | PGCF, PGRF, PTEF, PMAF | PBS, PCO, PMS, PVE |
|--|---|--|---|
| COMPOSITION COMPOSIZIONE | Mid grain leather Pelle mezzo fiore | Perforated mid grain leather Pelle mezzo fiore traforata | Vintage mid grain leather Pelle mezzo fiore anticata |
| WEIGHT GRAMMATURA | 0.9-1.1 mm (0.035-0.043 in) | 0.9-1.1 mm (0.035-0.043 in) | 0.8-1.0 mm (0.031-0.039 in) |
| RUBBING FASTNESS SOLIDITÀ ALLO SFREGAMENTO | Dry (500 Cycles) and Wet (250 Cycles) ≥ 4 (EN ISO 11640:1998) | Dry (500 Cycles) and Wet (250 Cycles) ≥ 4 (EN ISO 11640:1998) | Dry (50 Cycles) and Wet (20 Cycles) ≥ 3 (EN ISO 11640:1998) |
| LIGHT FASTNESS SOLIDITÀ ALLA LUCE | ≥ 5 (ISO 105 B02) (MET.5) | ≥ 5 (ISO 105 B02) (MET.5) | ≥ 3 (ISO 105-B02) (MET.5) |
| FLAME RESISTANCE RESISTENZA AL FUOCO | BS 5852:1979 BS EN 1021-1-2:2006 US CA TB 117-2013 - Compliant to the criteria certifying the absence of flame retardant chemicals (AB 2998) | BS 5852:1979 BS EN 1021-1-2:2006 | BS 5852:1979 BS EN 1021-1-2:2006 |
| APPROVED OMOLOGATO |  |  | / |
| CLEANING LAVAGGIO | Clean with a damp cloth using water. Do not use detergents, solvents, bleached, abrasives. Pulire con un panno umido d'acqua. Non usare detersivi, solventi, candeggianti, abrasivi. | Clean with a damp cloth using water. Do not use detergents, solvents, bleached, abrasives. Pulire con un panno umido d'acqua. Non usare detersivi, solventi, candeggianti, abrasivi. | Clean with a damp cloth and warm water. Do not use detergents, solvents, bleached, abrasives. Pulire con acqua calda e un panno umido. Non usare detersivi, solventi, candeggianti, abrasivi. |

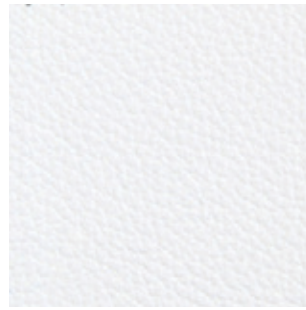
P

Collection / Collezione

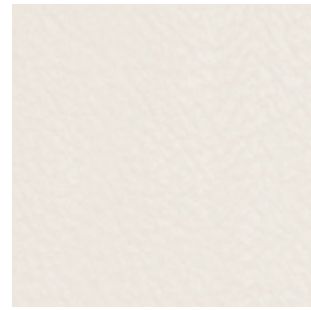


LINEA

PBI



PLA



PGC



PSA



PGA



PBE



PGN



PTA



PTE



PRO



PGR



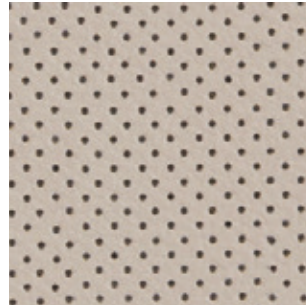
PMA



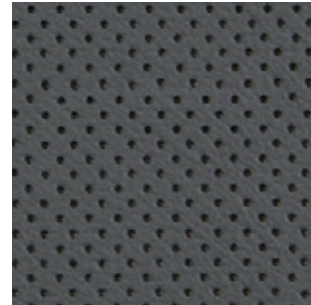
PNE



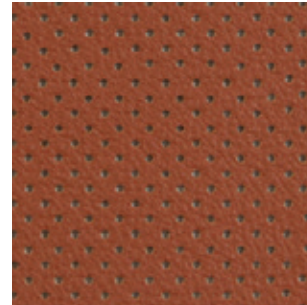
PGCF



PGRF



PTEF



PMAF



only for collections / solo per collezioni



Vic and Vic Metal

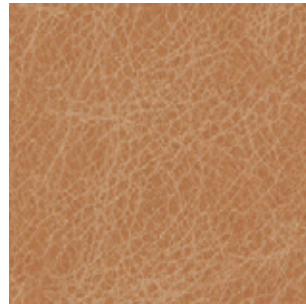
**Inner part of the back,
upper part of the seat**
Lato interno dello schienale
e parte superiore del sedile

Collection / Collezione

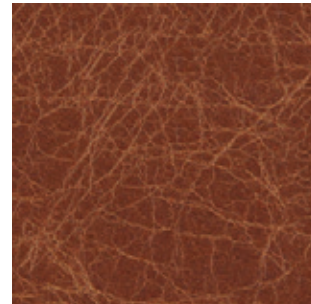


TUSCANIA

PBS



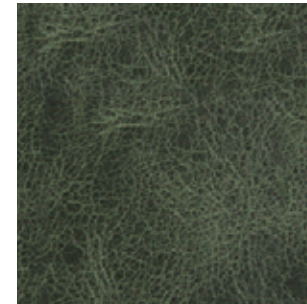
PCO



PMS



PVE



only for collections / solo per collezioni



Malmö



Inga

Hard leather

Cuoio

category F

GENUINE AND REGENERATED
NATURALE E RIGENERATO

PEDRALI

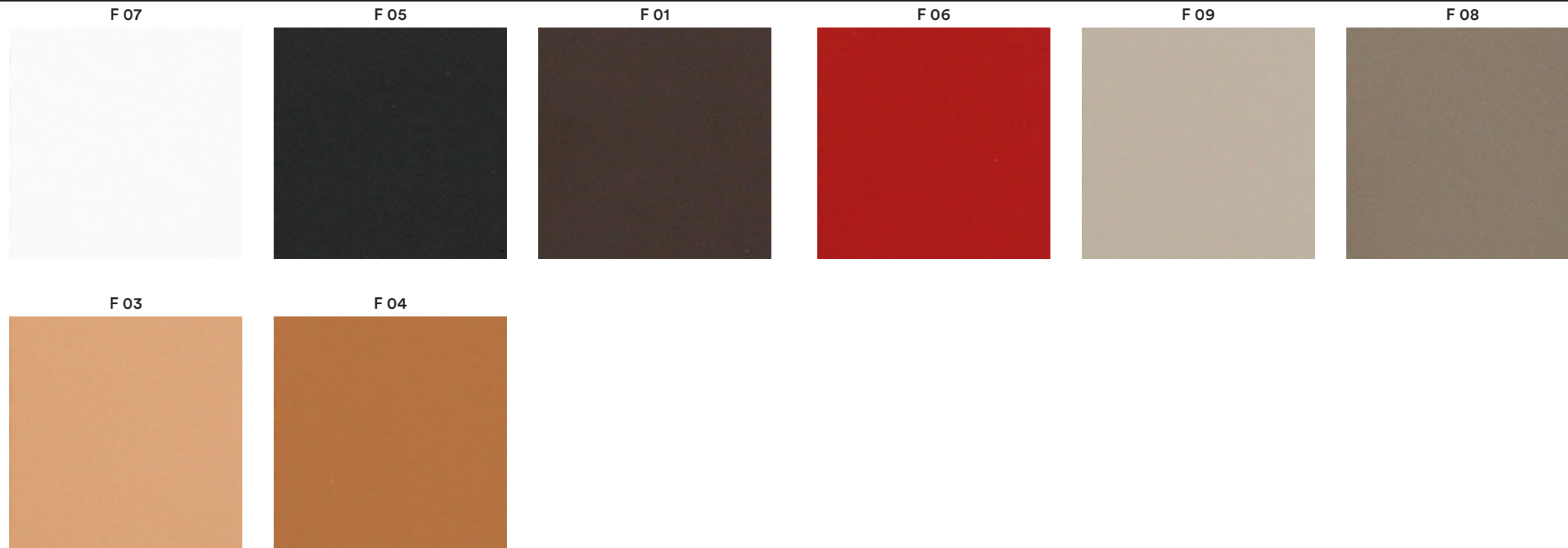
HARD LEATHER / CUOIO

F

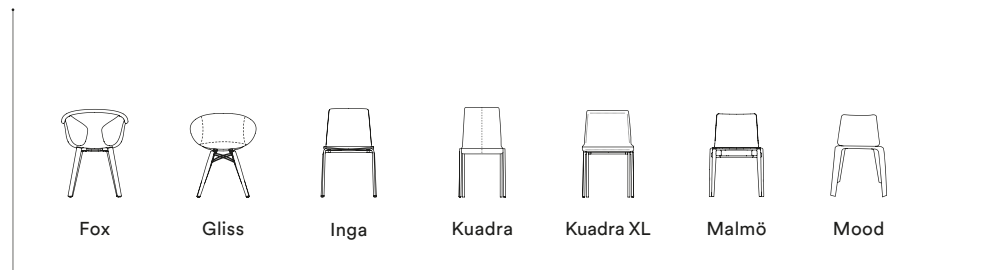
| | F01÷F09 | F11÷F19 |
|--|--|---|
| COMPOSITION COMPOSIZIONE | Genuine hard leather, tanned with vegetable substances Cuoio naturale, conciato con sostanze vegetali | Regenerated hard leather. Tanned leather cuttings and shavings linked with natural rubber lattelx Cuoio rigenerato. Ritagli e rasatura di cuoio conciato legati con lattice di gomma naturale |
| WEIGHT GRAMMATURA | 2 mm (0.079 in) | 2 mm (0.079 in) |
| RUBBING FASTNESS SOLIDITÀ ALLO SFREGAMENTO | Satisfactory up to maximum 700 abrasions in humid environment and 1000 abrasions in dry environment Soddisfacente sino a max 700 abrasioni all'umido e 1000 abrasioni al secco | Dry and Wet >1000 (UNI EN ISO 11640) |
| LIGHT FASTNESS SOLIDITÀ ALLA LUCE | / | 4-5 Xenotest Method |
| FLAME RESISTANCE RESISTENZA AL FUOCO | / | BS EN 1021 1&2 BS 5852 Part 1 US CA TB 117 E Part 1 |
| CLEANING LAVAGGIO | Clean with a damp cloth using water Pulire con un panno umido d'acqua | Clean with a damp cloth using water Pulire con un panno umido d'acqua |

F

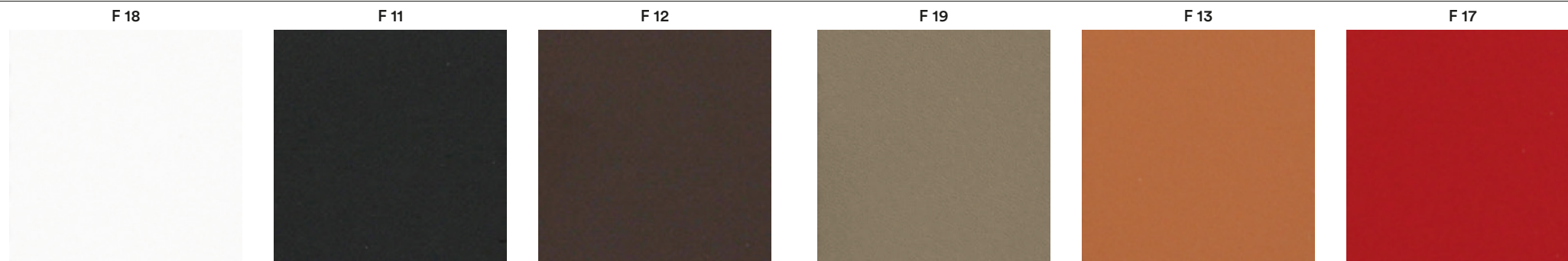
GENUINE HARD LEATHER
CUOIO NATURALE



only for collections / solo per collezioni



REGENERATED HARD LEATHER
CUOIO RIGENERATO



only for collections / solo per collezioni



Velvet

Velluto

category E | G | H | N

PEDRALI

VELVET / VELLUTO

| | E | G |  | H  | N  |
|---|---|---|--|--|--|
| | E01+E09 | G230+G239 | G180+G185 | H40+H53 | N20+N27 |
| COMPOSITION COMPOSIZIONE | 100% Cotton | 100% Cotton | 100% TREVIRA CS® | 100% TREVIRA CS® | 100% Polyester FR |
| WEIGHT GRAMMATURA | 450 g/m ² (13.27 oz/yd ²) | 540 g/m ² (15.93 oz/yd ²) | 457 g/m ² (13.48 oz/yd ²) | 470 g/m ² (13.86 oz/yd ²) | 685 g/m ² (20.20 oz/yd ²) |
| ABRASION ABRASIONE | 50.000 cycles Martindale (EN ISO 12947-2) | 70.000 cycles Martindale (EN ISO 12947-2) | 50.000 cycles Martindale (EN ISO 12947) | 190.000 cycles Martindale (EN ISO 12947-2) | 100.000 cycles Martindale (EN ISO 12947) |
| RUBBING FASTNESS SOLIDITÀ ALLO SFREGAMENTO | Dry 4-5 and Wet 3-5, scale 1-5 (ISO 105-X12) | Dry and Wet 4-5, scale 1-5 (ISO 105-X12) | Dry and Wet 4-5, scale 1-5 (ISO 105-X12) | Dry and Wet 4-5, scale 1-5 (ISO 105-X12) | Dry 5 and Wet 4-5, scale 1-5 (ISO 105-X12) |
| PILLING | / | 5, scale 1-5 (EN ISO 12945-2) | 4-5, scale 1-5 (EN ISO 12945) | 5, scale 1-5 (EN ISO 12945-2) | 4, scale 1-5 (EN ISO 12945) |
| LIGHT FASTNESS SOLIDITÀ ALLA LUCE | 4-6, scale 1-8 (ISO 105-B02) | 4-5, scale 1-8 (ISO 105-B02) | 6, scale 1-8 (ISO 105-B02) | 5, scale 1-8 (ISO 105-B02) | 5-6, scale 1-8 (ISO 105-B02) |
| SOUND ABSORPTION ASSORBIMENTO ACUSTICO | / | folded: $\alpha_w=0.75$ (EN ISO 354) | folded: $\alpha_w=0.85$ Class B (EN ISO 354) | folded: $\alpha_w=0.70$ (EN ISO 354) | folded: $\alpha_w=0.80$ Class B (EN ISO 354) |
| FLAME RESISTANCE RESISTENZA AL FUOCO | BS 5852 Part 1 | BS 5852 Part 1 US CA TB 117-2013 - Compliant to the criteria certifying the absence of flame retardant chemicals (AB 2998) | ASTM E84 Class A Unadhered AS/NZS 3837 Class 1 BS 5852 Part 1 BS 5852 Crib 5 BS 5867 Part 2 type B DIN 4102 B1 EN 1021 - 1/2 EN 13501-1, B-s1, d0 GB 8624 B1 IMO FTP Code 2010: Part 8 IMO FTP Code 2010: Part 5 NF D60-013 NF P92 507 M1 ONORM B1/Q1 CAN ULC S102 SN 198 898 5.2 UNI 9177 Classe 1 UNI 9175 Classe 1 IM US CA TB 117-2013 | BS 5852 Part 0,1 DIN 4102 B1 EN 1021 - 1/2 IMO MSC 307(88) Annex 1 Part 7-8 NF P92 503-507 M1 NFPA 260 UNI 9177 Classe 1 UNI 9175 Classe 1 IM US CA TB 117-2013 | AS/NZS 1530.3 ASTM E84 Class A Unadhered AS/NZS 3837 Class 1 BS 5852 Crib 5 BS 5867 Part 2 type B DIN 4102 B1 EN 1021 - 1/2 EN 13501-1, B-s1, d0 EN 13773 Class 1 GB 8624 B1 IMO FTP Code 2010: Part 8 NFPA 260 NFPA 701 NF P92 507 M1 CAN ULC S102 S109 SN 198 898 5.2 UNI 9175 Classe 1 IM US CA TB 117-2013 |
| APPROVED OMOLOGATO | / | / |  PRODUCT CERTIFIED FOR LOW CHEMICAL EMISSIONS UL COMFG UL 2818 170168-420 | / |  PRODUCT CERTIFIED FOR LOW CHEMICAL EMISSIONS UL COMFG UL 2818 170168-420 |
| CLEANING LAVAGGIO |  |  |  |  |  |

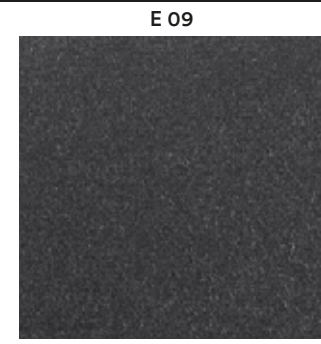
E

Collection / Collezione

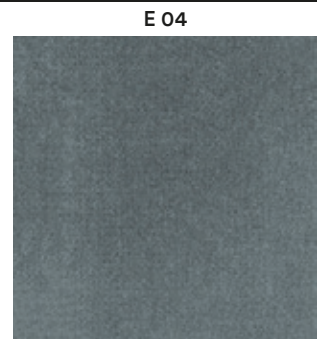
• **DEDAR**

ADAMO & EVA

from E01 to E09



E 09



E 04



E 03



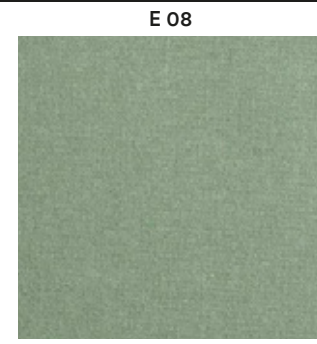
E 01



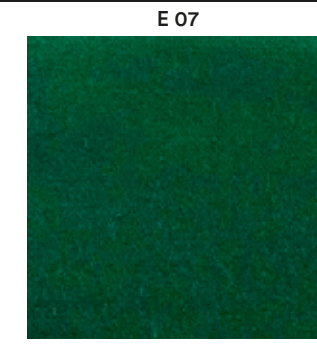
E 06



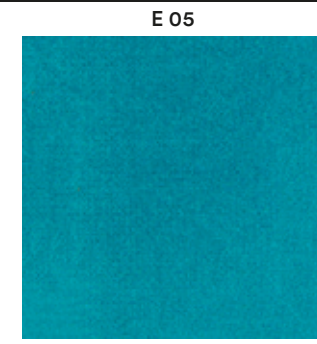
E 02



E 08



E 07

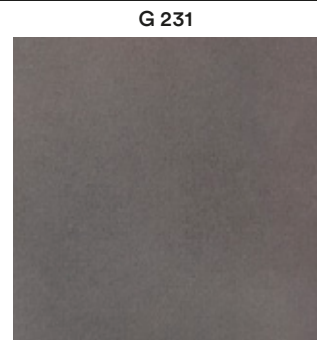


E 05

G



G 230



G 231



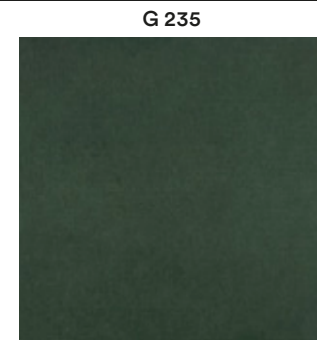
G 232



G 233



G 234



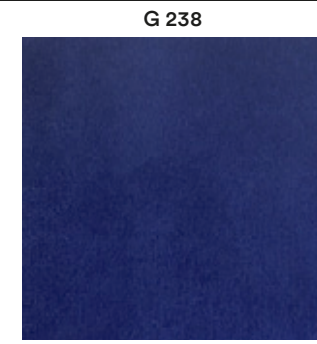
G 235



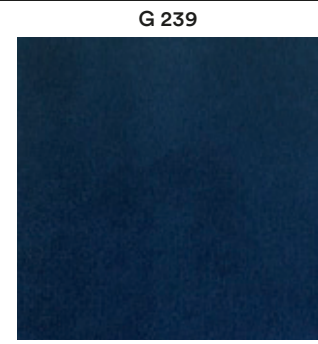
G 236



G 237



G 238



G 239



Collection / Collezione

• **kvadrat**

STILL

from G180 to G185

DESIGNER Georgina Wright



G 180



G 182



G 181



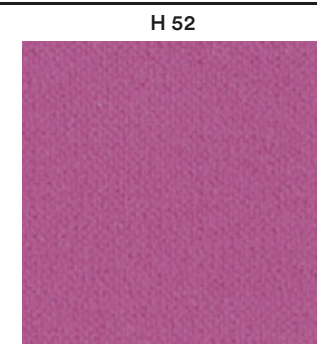
G 185



G 183



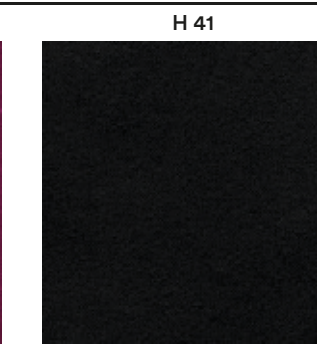
G 184



H 52



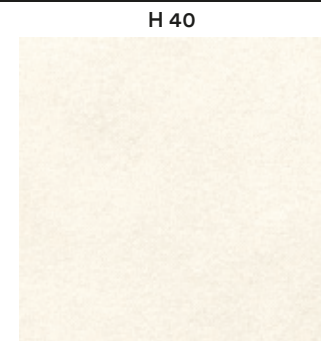
H 47



H 41



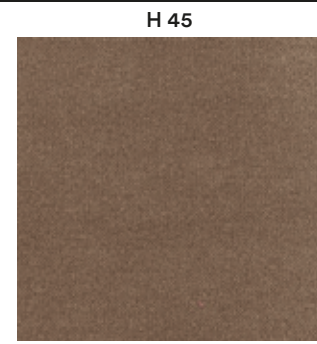
H



H 40



H 44



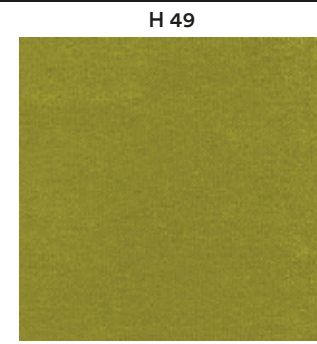
H 45



H 46



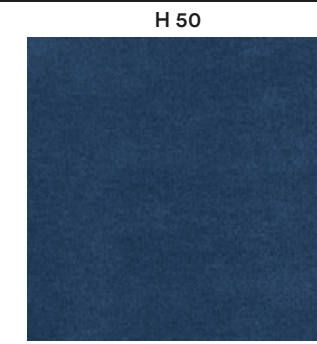
H 43



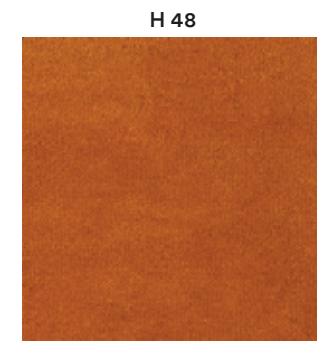
H 49



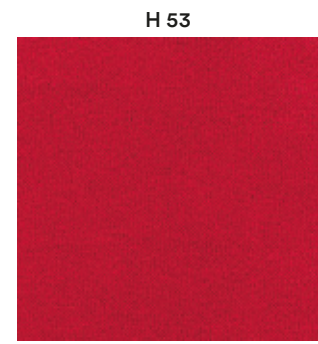
H 51



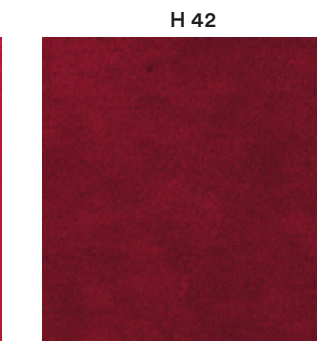
H 50



H 48



H 53



H 42



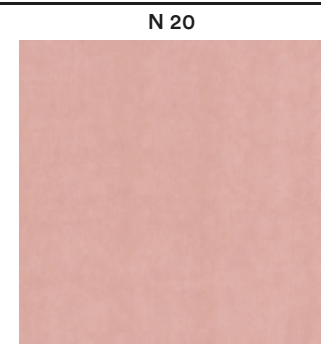
N

Collection / Collezione

• **kvadrat - SAICO**

BALBOA

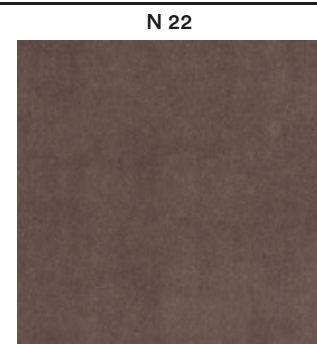
from N20 to N27



N 20



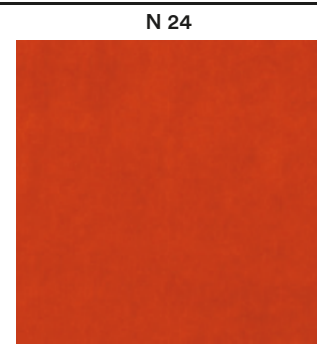
N 21



N 22



N 23



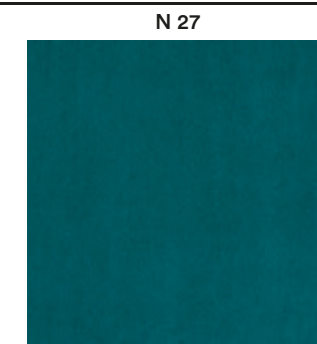
N 24



N 25



N 26



N 27