

Laminate Tops

FENIX ABS EDGE SATINE BRASS

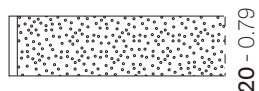
PEDRALI®

100%
MADE IN
ITALY

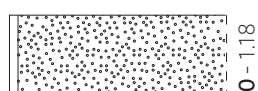
DESIGN
Pedrali R&D



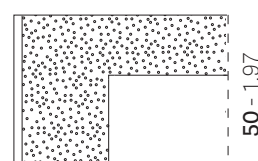
mm - in



20 - 0.79



30 - 1.18



50 - 1.97

EN: FENIX tops available in different shapes and sizes. Chipboard core with flat brass ABS edge, thickness 20mm, 30mm or 50mm

IT: Ripiani con finitura FENIX disponibili in diverse forme e misure. Anima in truciolare con bordo piatto in ABS ottonato, spessore 20mm, 30mm o 50mm

DE: Platte mit FENIX-Ausführung in verschiedenen Formen und Größen. Spanplattenkern mit flacher ABS-Kante, messingfarben. Dicke 20mm, 30mm oder 50mm

FR: Plateaux avec finition FENIX disponibles en différentes formes et tailles. âme en bois aggloméré avec chant plat en ABS plaqué laiton, épaisseur 20 mm, 30 mm ou 50 mm

ES: Estantes con acabado FENIX disponibles en diferentes formas y medidas. Alma del tablero en aglomerado con borde recto en ABS latonado, grosor 20mm, 30mm o 50mm

MATERIALS

Materiali
Materialien
Matériaux
Materiales

• TOP - RIPIANO - TISCHPLATTE - PLATEAU - SOBRE

EN: Laminate with matching flat brass edge

IT: Laminato con bordo piatto in ABS ottonato

DE: Laminat mit passender flache ABS-Kante

FR: Stratifié avec bord plat en ABS plaqué laiton

ES: Laminado con borde recto en ABS latonado

• COLOUR - COLORE - FARBE - COULEUR - COLOR



0720

EN: For more information see finishing legend on the website

IT: Per maggiori informazioni vedere legenda finiture sul sito web

• CORE - ANIMA - KERN - COEUR - ALMA

EN: Chipboard core

IT: Anima truciolare

DE: Sperrholzkern

FR: Coeur en aggloméré

ES: Alma en aglomerado

SIZES

Misure
Abmessungen
Dimensions
Medidas

• THICKNESS - SPESSORE - STÄRKE - ÉPAISSEUR - ESPESOR

20 mm - 0.79" 30 mm - 1.18" 50 mm - 1.97"

EN: Dimensional tolerance ± 0,5 mm / ± 0.02"

IT: Tolleranza dimensionale ± 0,5 mm / ± 0.02"

• SIZES - MISURE - ABMESSUNGEN - DIMENSIONS - MEDIDAS

EN: Dimensional tolerance ± 5 mm / ± 0.2"

IT: Tolleranza dimensionale ± 5 mm / ± 0.2"

ROUND - TONDO - RUNDER - ROND - REDONDO

Ø590 mm - Ø690 mm - Ø790 mm - Ø890 mm - Ø990 mm - Ø1190 mm - Ø1290 mm

Ø23.2" - Ø27.2" - Ø31.1" - Ø35" - Ø39" - Ø46.8" - Ø50.8"



SQUARE - QUADRATO - VIERECKIG - CARRÉ - CUADRADO

590x590 mm - 690x690 mm - 790x790 mm - 890x890 mm

23.2"x23.2" - 27.2"x27.2" - 31.1"x31.1" - 35"x35"



R50
1.5"

Reproduction of this document is strictly prohibited without prior written authorisation from Pedrali Spa. Sizes, weights and finishes may change without previous notice.
È vietata la riproduzione del seguente documento senza previa autorizzazione scritta da parte di Pedrali Spa. Dimensioni, pesi e finiture possono variare senza alcun preavviso.

ST_LAMINATE_TOPS_FENIX_ABS_EDGE_SATINE_BRASS_2022.0

RECTANGULAR - RETTANGOLARE - RECHTECKIG - RECTANGULAIRE - RECTANGULAR

1190x790 mm
46.8" x 31.1"

Only thickness 20 / 30 mm - 0.79" / 1.18"
990x590 mm - 1090x690 mm - 1290x790 mm
39" x 23.2" - 42.9" x 27.2" - 50.8" x 31.1"

Only thickness 30/50 mm - 1.18" / 1.97"
1390x790 mm - 1590x790 mm - 1590x890 mm
62.6" x 31.1" - 62.6" x 31.1" - 62.6" x 35"



REGULATIONS AND CERTIFICATES

Normative e Certificazioni
Bestimmungen und Zertifikat
Normatives et certifications
Normativas y certificados

• PRODUCT CERTIFICATIONS - CERTIFICAZIONI DI PRODOTTO - PRODUKTZERTIFIZIERUNGEN - CERTIFICATIONS DE PRODUITS - CERTIFICACIONES DE PRODUCTO

EN: Resistance to surface wear EN 438-2.10 (Revs IP \geq 150 e A \geq 350)
IT: Resistenza all'abrasione EN 438-2.10 (Giri IP \geq 150 e A \geq 350)
EN: Resistance to cigarette burns EN 438-2.30 (rating 3)
IT: Resistenza alle bruciaciture di sigaretta EN 438-2.30 (grado 3)
EN: Resistance to scratching EN 438-2.25 (rating \geq 3)
IT: Resistenza al graffio EN 438-2.25 (grado \geq 3)
EN: Resistance to staining EN 438-2.26 (rating 5)
IT: Resistenza alle macchie EN 438-2.26 (grado 5)
EN: Lightfastness EN 438-2.27 (rating \geq 4)
IT: Solidità del colore alla luce EN 438-2.27 (grado \geq 4)

• ENVIRONMENTAL IMPACT - IMPATTO AMBIENTALE - UMWELTBELASTUNG - IMPACT DUR L'ENVIRONNEMENT - IMPACTO AMBIENTAL

MATERIAL Materiale	Kg WEIGHT Peso	% TOTAL ITEM Totale articolo	MATERIAL RECYCLABILITY Riciclabilità del materiale	% MINIMUM RECYCLED AT ORIGIN Minima riciclato all'origine	% RECYCLABLE END OF PRODUCT LIFE Riciclabile fine vita prodotto
Zamak Zama	0,01	0,07	YES	50	100
ABS ABS	0,16	1,07	YES	0	100
Chipboard Truciolare	13,19	87,93	NO	90	0
Solid laminate Stratificato	1,64	10,93	YES	0	100
TOTAL TOTALE	15Kg	--	--	79,2 %	12,1 %

EN: Percentages referred to top 50.8" x 31.1"
IT: Percentuali riferite al ripiano 1290x790 mm

• COMPANY CERTIFICATIONS - CERTIFICAZIONI AZIENDALI - UNTERNEHMENSZERTIFIZIERUNGEN - CERTIFICATIONS D'ENTREPRISE - CERTIFICACIONES DE LA EMPRESA

ISO 14001
Environmental management system
Sistema di gestione ambientale



ISO 9001
Quality management system
Sistema di gestione della qualità

