

Laminate Tops

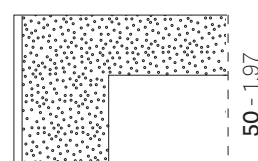
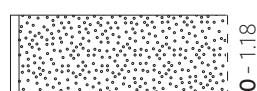
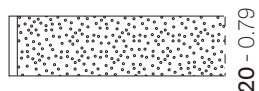
ABS EDGE SATINE BRASS

PEDRALI®

100%
MADE IN
ITALY

DESIGN
Pedrali R&D

mm - in



EN: Tops with chipboard core, available in different shapes and sizes. Flat brass ABS edge, thickness 20mm, 30mm or 50mm

IT: Ripiani con anima in truciolare, disponibili in diverse forme e misure. Bordo piatto in ABS ottonato, spessore 20mm, 30mm o 50mm

DE: Platte mit Spanplattenkern, erhältlich in verschiedenen Formen und Größen. Flache ABS-Kante, messingfarben. Dicke 20mm, 30mm oder 50mm

FR: Plateaux avec âme en bois aggloméré, disponibles en différentes formes et tailles. Chant plat en ABS plaqué laiton, épaisseur 20 mm, 30 mm ou 50 mm

ES: Sobres con alma de aglomerado, disponibles en diferentes formas y medidas. Borde recto en ABS latonado, grosor 20mm, 30mm o 50mm

MATERIALS

Materiali
Materialien
Matériaux
Materiales

• TOP - RIPIANO - TISCHPLATTE - PLATEAU - SOBRE

EN: Laminate with matching flat brass edge

IT: Laminato con bordo piatto in ABS ottonato

DE: Laminat mit passender flache ABS-Kante

FR: Stratifié avec bord plat en ABS plaqué laiton

ES: Laminado con borde recto en ABS latonado

• COLOUR - COLORE - FARBE - COULEUR - COLOR



1456

Shiny/ Lucido



1459

Shiny/ Lucido

EN: For more information see finishing legend on the website

IT: Per maggiori informazioni vedere legenda finiture sul sito web

• CORE - ANIMA - KERN - COEUR - ALMA

EN: Chipboard core

IT: Anima truciolare

DE: Sperrholzkern

FR: Coeur en aggloméré

ES: Alma en aglomerado

SIZES

Misure
Abmessungen
Dimensions
Medidas

• THICKNESS - SPESSORE - STÄRKE - ÉPAISSEUR - ESPESOR

20 mm - 0.79" 30 mm - 1.18" 50 mm - 1.97"

EN: Dimensional tolerance ± 0,5 mm / ± 0.02"

IT: Tolleranza dimensionale ± 0,5 mm / ± 0.02"

• SIZES - MISURE - ABMESSUNGEN - DIMENSIONS - MEDIDAS

EN: Dimensional tolerance ± 5 mm / ± 0.2"

IT: Tolleranza dimensionale ± 5 mm / ± 0.2"

ROUND - TONDO - RUNDER - ROND - REDONDO

Ø590 mm - Ø690 mm - Ø790 mm - Ø890 mm - Ø990 mm - Ø1190 mm - Ø1290 mm

Ø23.2" - Ø27.2" - Ø31.1" - Ø35" - Ø39" - Ø46.8" - Ø50.8"



SQUARE - QUADRATO - VIERECKIG - CARRÉ - CUADRADO

590x590 mm - 690x690 mm - 790x790 mm - 890x890 mm

23.2"x23.2" - 27.2"x27.2" - 31.1"x31.1" - 35"x35"



Reproduction of this document is strictly prohibited without prior written authorisation from Pedrali SpA. Sizes, weights and finishes may change without previous notice.
È vietata la riproduzione del seguente documento senza previa autorizzazione scritta da parte di Pedrali SpA. Dimensioni, pesi e finiture possono variare senza alcun preavviso.

ST_LAMINATE_TOPS_ABS_EDGE_SATINE_BRASS_2022.0

RECTANGULAR - RETTANGOLARE - RECHTECKIG - RECTANGULAIRE - RECTANGULAR

1190x790 mm
46.8" x 31.1"

Only thickness 20 / 30 mm - 0.79" / 1.18"
990x590 mm - 1090x690 mm - 1290x790 mm
39" x 23.2" - 42.9" x 27.2" - 50.8" x 31.1"

Only thickness 30/50 mm - 1.18" / 1.97"
1390x790 mm - 1590x790 mm - 1590x890 mm
54.7" x 31.1" - 62.6" x 31.1" - 62.6" x 35"



REGULATIONS AND CERTIFICATES

Normative e Certificazioni
Bestimmungen und Zertifikat
Normatives et certifications
Normativas y certificados

• PRODUCT CERTIFICATIONS - CERTIFICAZIONI DI PRODOTTO - PRODUKTZERTIFIZIERUNGEN - CERTIFICATIONS DE PRODUITS - CERTIFICACIONES DE PRODUCTO

EN: Resistance to surface wear EN 438-2.10 (Revs IP ≥ 150 e A ≥ 350)

IT: Resistenza all'abrasione EN 438-2.10 (Giri IP ≥ 150 e A ≥ 350)

EN: Resistance to cigarette burns EN 438-2.30 (rating 3)

IT: Resistenza alle bruciaciture di sigaretta EN 438-2.30 (grado 3)

EN: Resistance to scratching EN 438-2.25 (rating ≥ 3)

IT: Resistenza al graffio EN 438-2.25 (grado ≥ 3)

EN: Resistance to staining EN 438-2.26 (rating 5)

IT: Resistenza alle macchie EN 438-2.26 (grado 5)

EN: Lightfastness EN 438-2.27 (rating ≥ 4)

IT: Solidità del colore alla luce EN 438-2.27 (grado ≥ 4)

• ENVIRONMENTAL IMPACT - IMPATTO AMBIENTALE - UMWELTBELASTUNG - IMPACT DUR L'ENVIRONNEMENT - IMPACTO AMBIENTAL

MATERIAL Materiale	Kg WEIGHT Peso	% TOTAL ITEM Totale articolo	MATERIAL RECYCLABILITY Riciclabilità del materiale	% MINIMUM RECYCLED AT ORIGIN Minima riciclato all'origine	% RECYCLABLE END OF PRODUCT LIFE Riciclabile fine vita prodotto
Zamak Zama	0,01	0,14	YES	50	100
ABS ABS	0,3	4,23	NO	0	100
Chipboard Truciolare	4	56,3	NO	90	0
Solid laminate Stratificato	2,5	4	YES	0	100
TOTAL TOTALE	7,1 Kg	--	--	82,5%	8,5%

EN: Percentages referred to top 23.2"x23.2"

IT: Percentuali riferite al ripiano 590x590 mm

• COMPANY CERTIFICATIONS - CERTIFICAZIONI AZIENDALI - UNTERNEHMENSZERTIFIZIERUNGEN - CERTIFICATIONS D'ENTREPRISE - CERTIFICACIONES DE LA EMPRESA

ISO 14001
Environmental management system
Sistema di gestione ambientale

ISO 9001
Quality management system
Sistema di gestione della qualità

